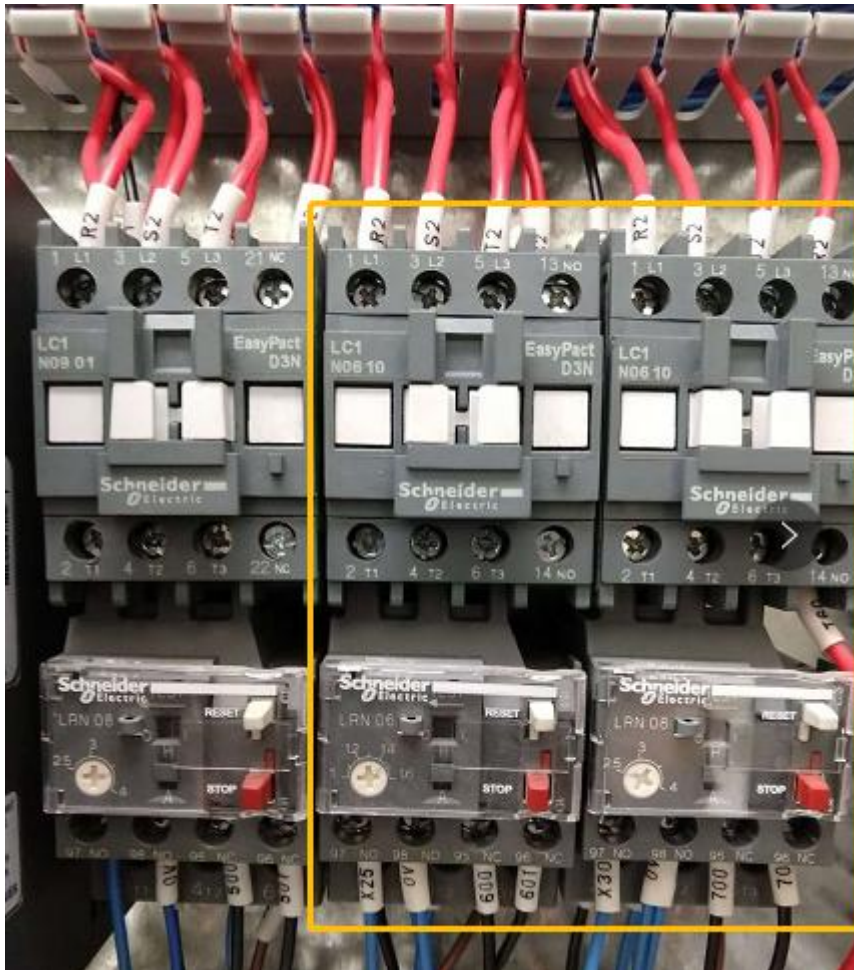


1. To connect the feeder to weigher

1) Find out which contactor and relay is for the Z feeder

a) Press lifter A switch on screen, these 2 contactors clicks. Feeder contact is one of them



b) Press auger filler switch on screen, find which contactor is for the auger filler agitator

c) Suppose left contact clicks when press filler switch, then right contactor is for the feeder

2) Find out the corresponding replay

a) **Suppose** right contact is for feeder, see it's wire label, which is "700"



b) Find the relay with wire label "700"



c) The relay above is the one for Z feeder

3) Connect the wires

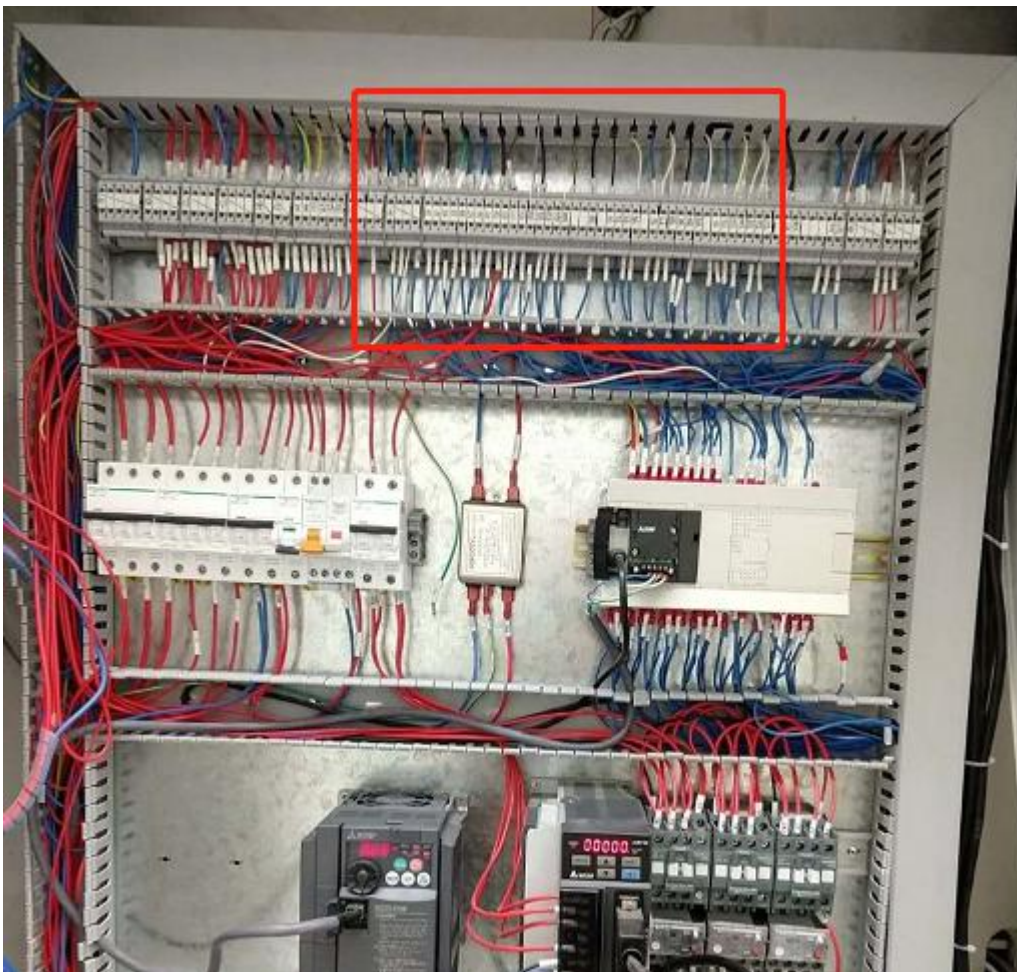
a) Take out the feeder relay

b) Find weiger wires with label "P067A" and "P067B"

c) Two wires of relay: one of them connect to terminal "M", another wire connect to wire of weiger with label "P067N"

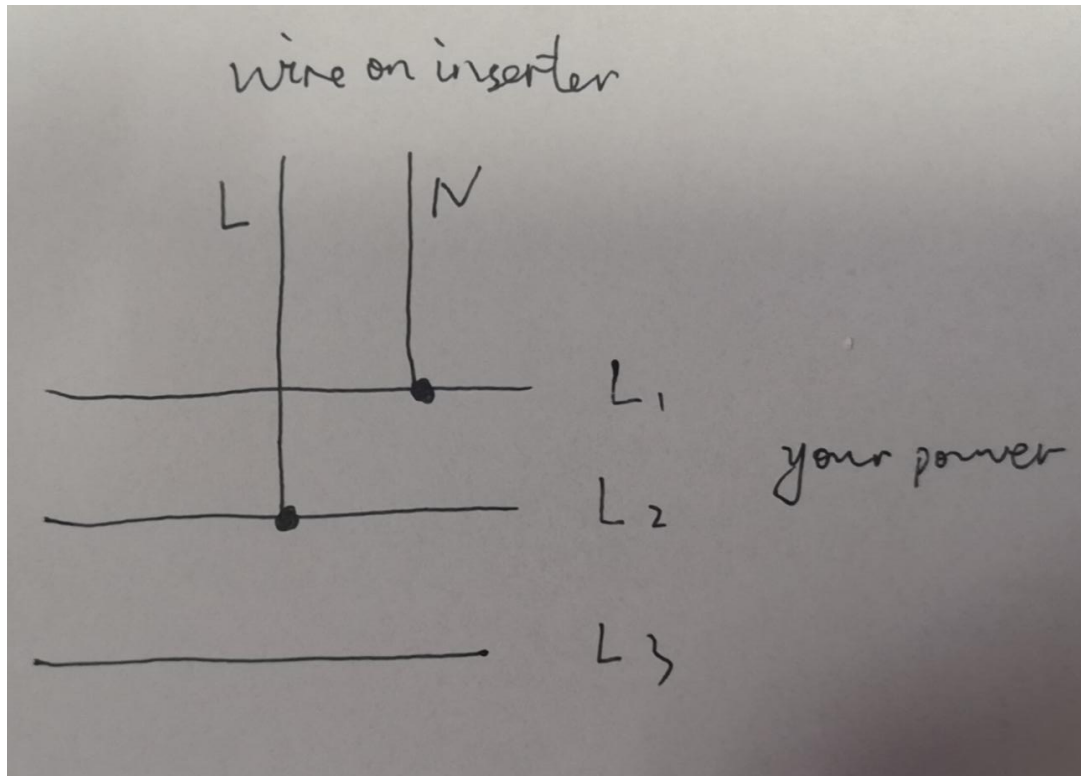
d) "P067A" on weiger connect to terminal "P"

Terminal P and M are at the top of electric board



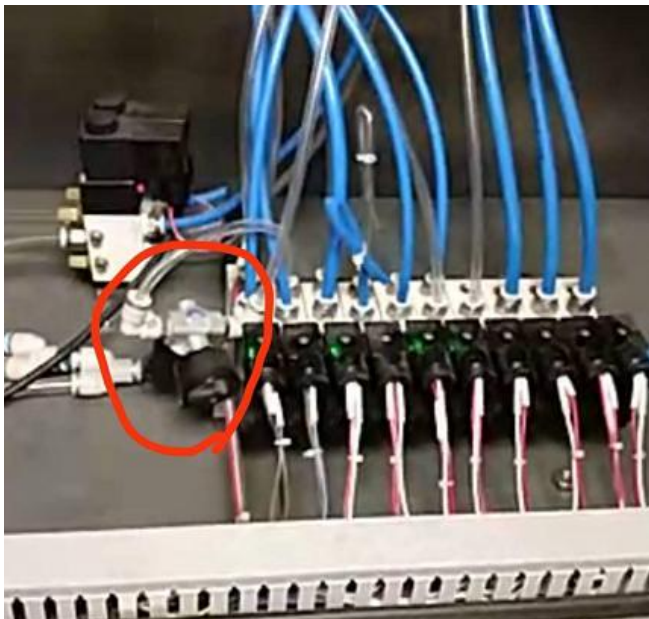
2. wire connection of desiccant inserter

- 1) Power of inserter is 1P 220V, two wires: 1 live wire L, 1 neutral wire N
- 2) Use your power 3 phase 220V, 3 live wire L1, L2, L3
- 3) Connect live wire of inserter to your live wire L1; its neutral wire to your live wire L2, live wire L3 left empty



3. Mechanical bag opener

- a) At the back of the machine, beside the solenoid valves



b) Find a screw bolt, at picture above in red, screw it clockwise to increase air pressure, screw it anti-clockwise to lower air pressure

c) In high pressure, the opener pans will open larger. Use lower pressure for small pouches. Recommend pressure at 0.2MPa on gauge



4. Suction cups

The pressure is not adjustable. Please increase pressure on pouch magazine, to make the pouch piles more compact and closer to the suction cups.

