

FRAME SPECIFICATIONS:
 STAINLESS STEEL - WASH DOWN UTILITY
 STAINLESS STEEL BUMPER BAR ASSEMBLIES
 MANUAL LUBRICATION - DISCRETE GREASE FITTINGS FOR AGITATOR SHAFT BEARINGS
 LUBE FREE BEARING FOR BOWL SUPPORT
 ALL LUBRICANTS ARE FDA AND/OR USDA APPROVED

BOWL SPECIFICATIONS:
 STAINLESS STEEL BOWL MATERIAL
 REFRIGERATION COOLING JACKET ON BOWL SHEET
 235 PSI RELIEF VALVE AND REFRIGERATION COOLANT HOSES (SHIPPED LOOSE)

AGITATOR SPECIFICATIONS:
 STAINLESS SIGMA STYLE AGITATOR AND SHAFT ASSEMBLY
 SANITARY REMOVABLE SHAFT SEALS-ROTOR TYPE WITH AIR PURGE
 10 TO 80 RPM AGITATOR SPEEDS (80 RPM @ 60 HZ)

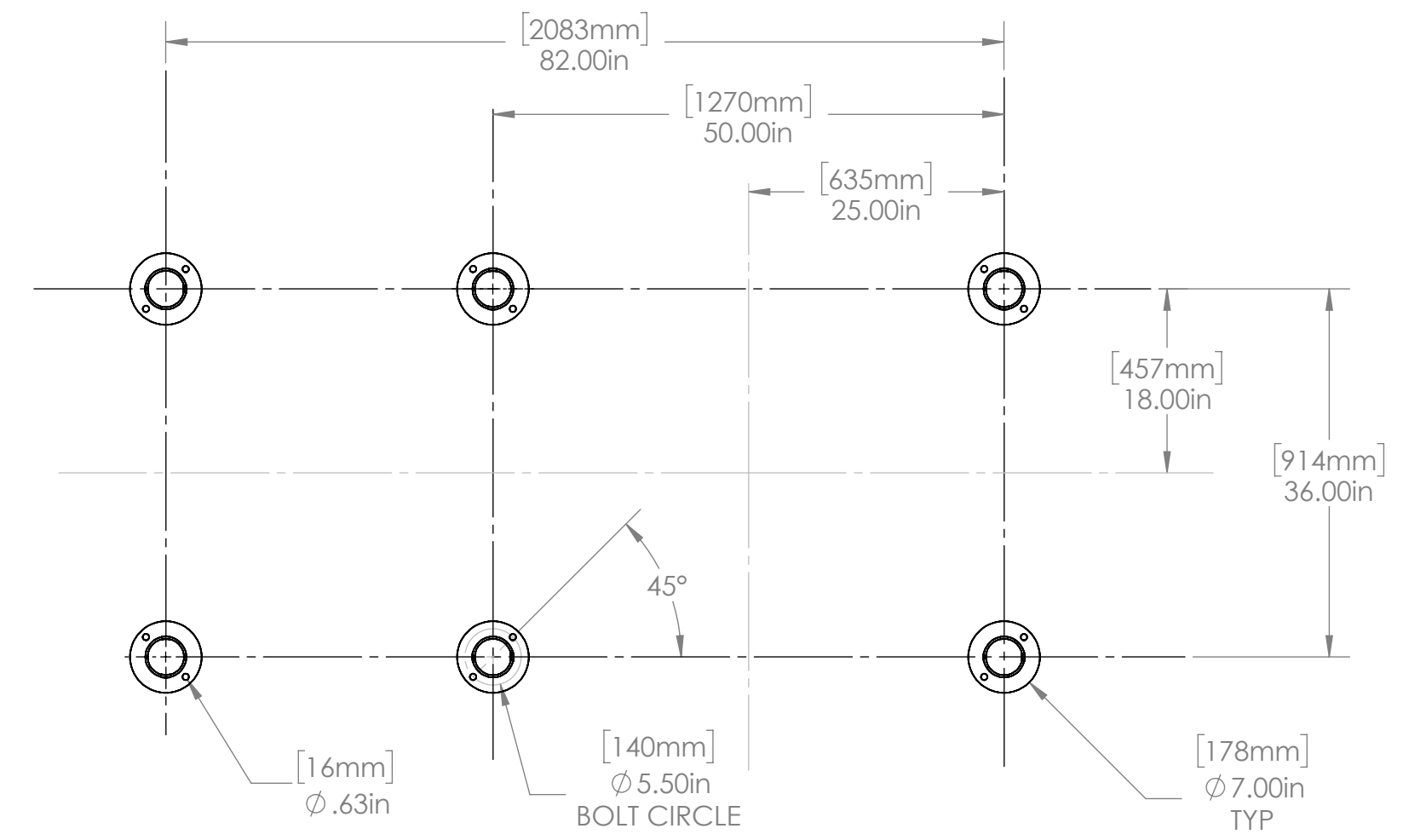
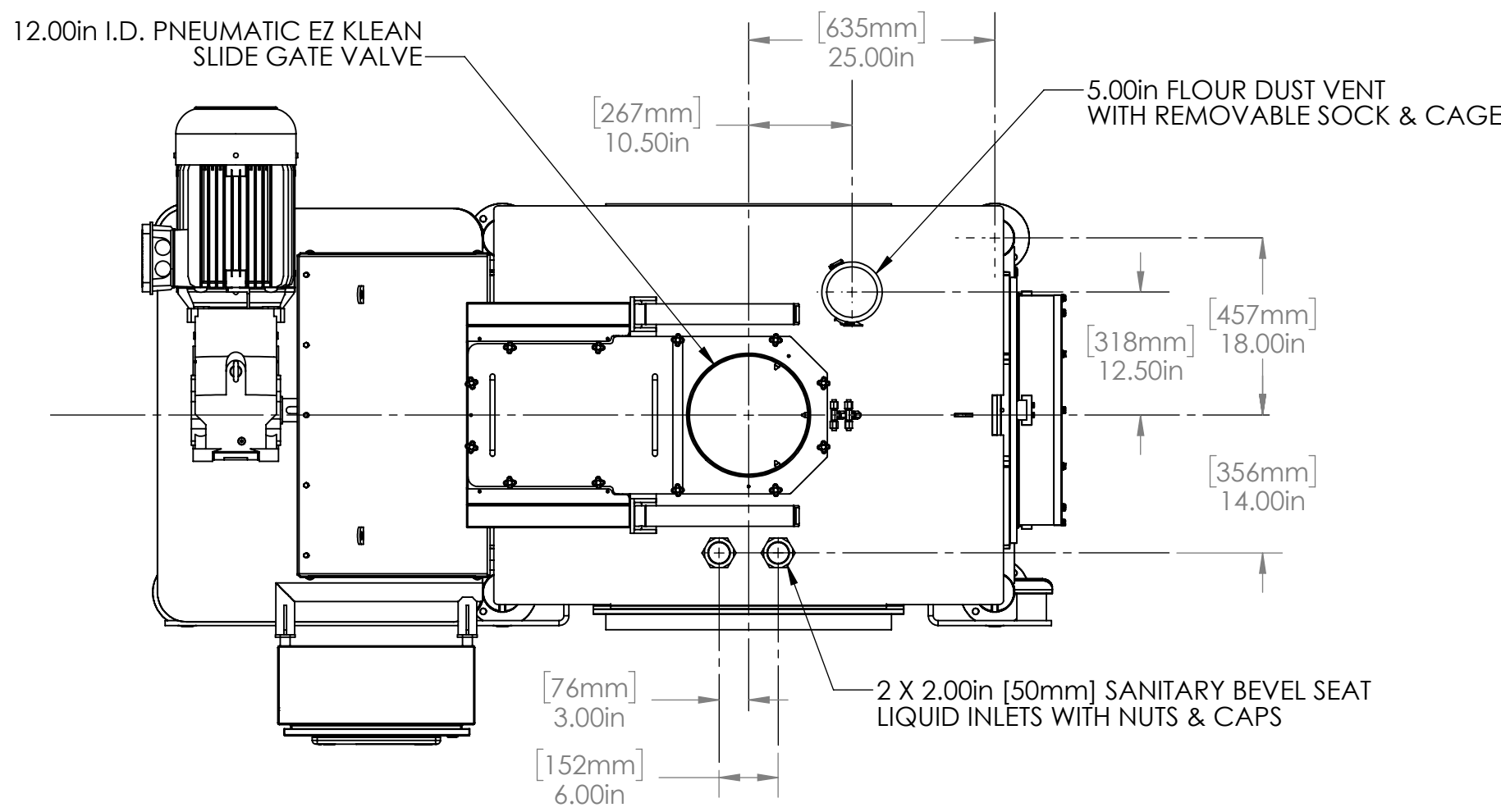
TILT SPECIFICATIONS:
 2 H.P. HYDRAULIC BOWL TILT, 140° APPROX. FORWARD
 MANUAL PUMP DOWN FEATURE
 SINGLE CYLINDER HYDRAULIC TILT ASSEMBLY ON LH END OF MIXER

DRIVE SPECIFICATIONS:
 20 HP TEFC INTEGRAL GEAR MOTOR DIRECTLY COUPLED TO AGITATOR SHAFT
 DRIVE ASSEMBLY ON LH END OF MIXER

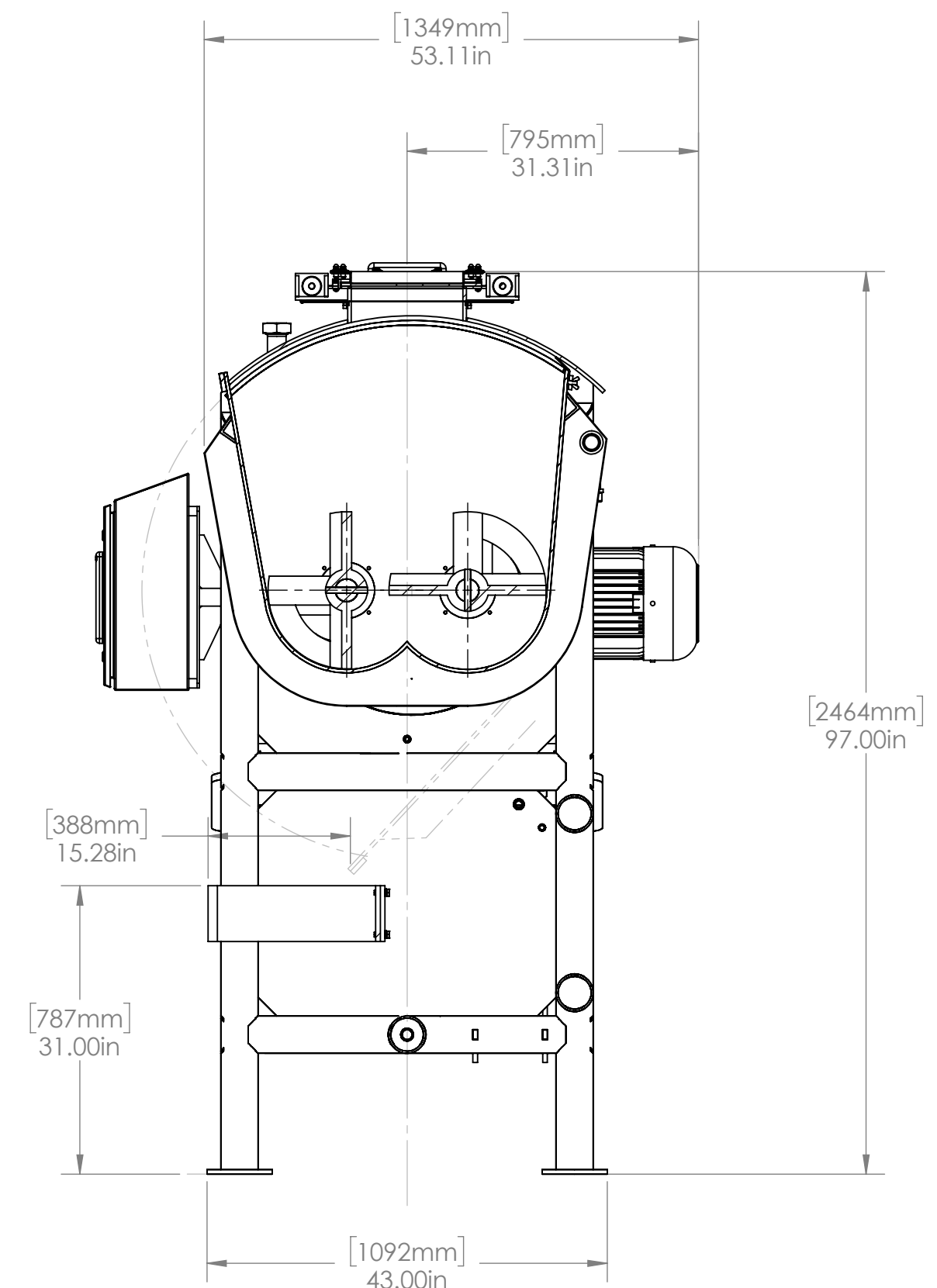
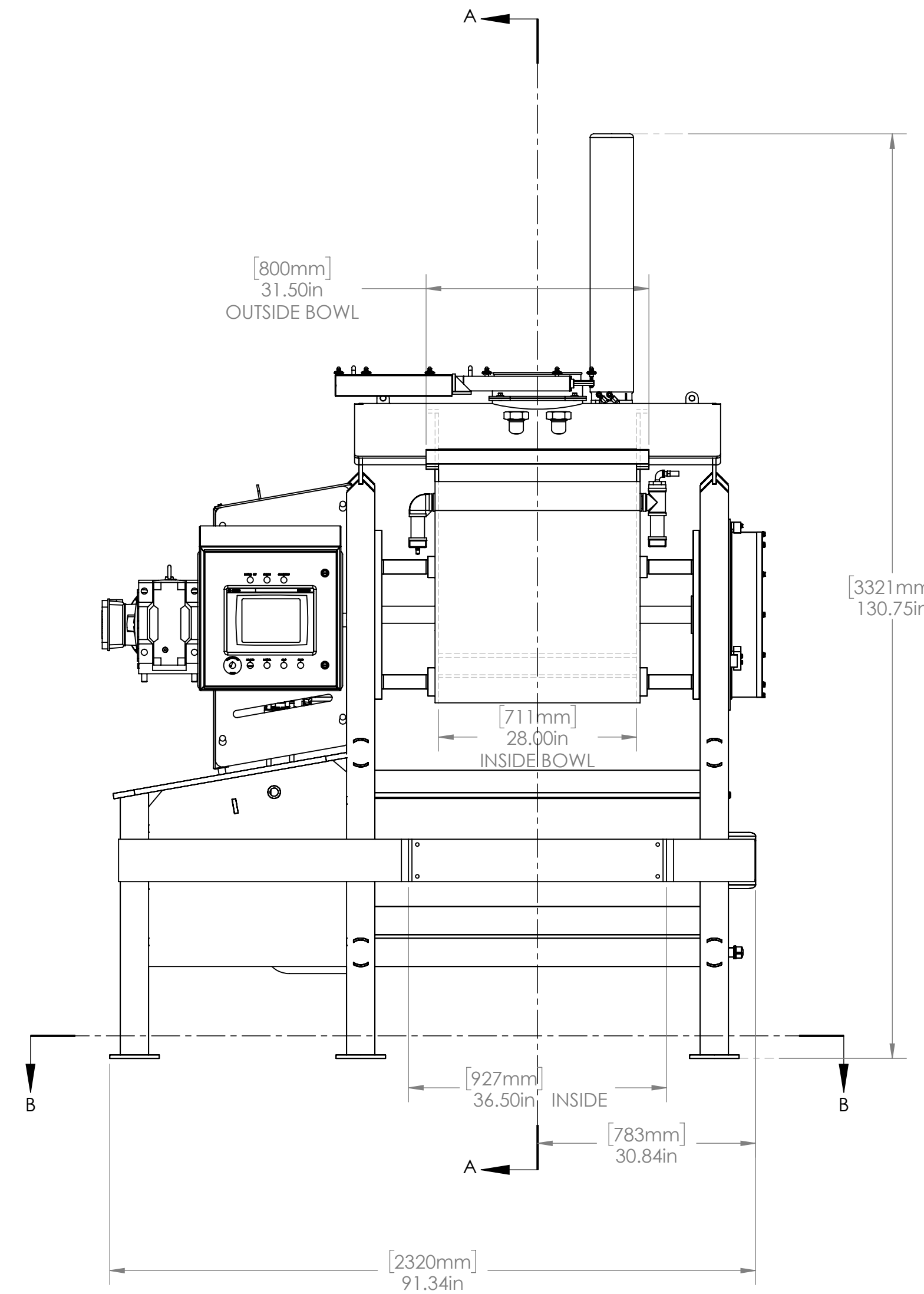
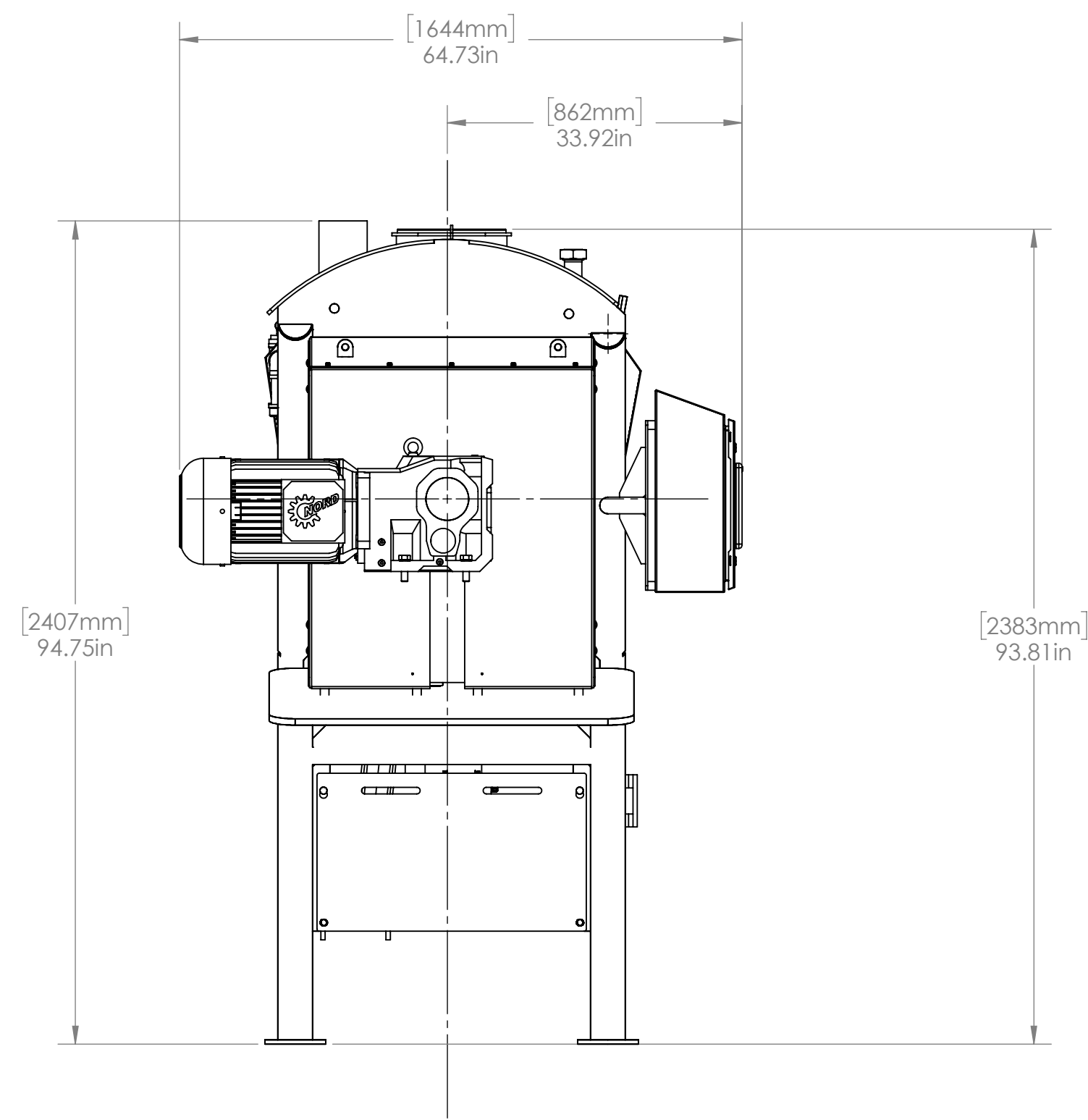
CANOPY SPECIFICATIONS:
 STAINLESS STEEL CANOPY MATERIAL
 (1) PNEUMATIC EZ KLEAN SLIDE TYPE FLOUR GATE VALVE (12" [305mm] I. D.)
 (2) 2in [51mm] SANITARY BEVEL SEAT LIQUID INLETS WITH NUTS & CAPS
 FRONT BOWL SEAL/REAR CANOPY SCRAPER
 U.H.M.W. SIDE BOWL SEALS
 FLOUR DUST VENT WITH SOCK & CAGE

ELECTRICAL SPECIFICATIONS:
 460V/3/60 +/- 10% PRIMARY VOLTAGE, 24VDC CONTROL VOLTAGE
 NEMA 4X WATER TIGHT MIXER MOUNTED OPERATOR CONTROL ENCLOSURE-ALLEN BRADLEY PANELVIEW PLUS 7, 10"
 NEMA 4X WATER TIGHT AC FREQUENCY DRIVE ENCLOSURE WITH AIR CONDITIONER
 ALLEN BRADLEY COMPACT LOGIX PLC
 ALLEN BRADLEY POWERFLEX AC FREQUENCY DRIVE
 PEERLESS CUSTOM MIX CYCLE SYSTEM (CMCS) PROGRAMMING
 REMOTE ELECTRICAL ENCLOSURE SUPPLIED WITH GRACE PORT ON OUTSIDE OF PANEL AND
 FLORESCENT LIGHT INSIDE

MIXER NET WEIGHT-8000 LBS
 DYNAMIC LOADS:
 RADIAL = 25% OF ESTIMATED MIXER WEIGHT
 AXIAL = 15% OF ESTIMATED MIXER WEIGHT
 VERTICAL = 25% OF ESTIMATED MIXER WEIGHT



SECTION B-B




SECTION A-A

TO MINIMIZE DELAYS IN SHIPMENT OF YOUR EQUIPMENT, REVIEW AND RETURN PRINTS A.S.A.P. PRODUCTION OF YOUR EQUIPMENT CANNOT START UNTIL APPROVED IS RECEIVED.

CUSTOMER APPROVAL STATUS

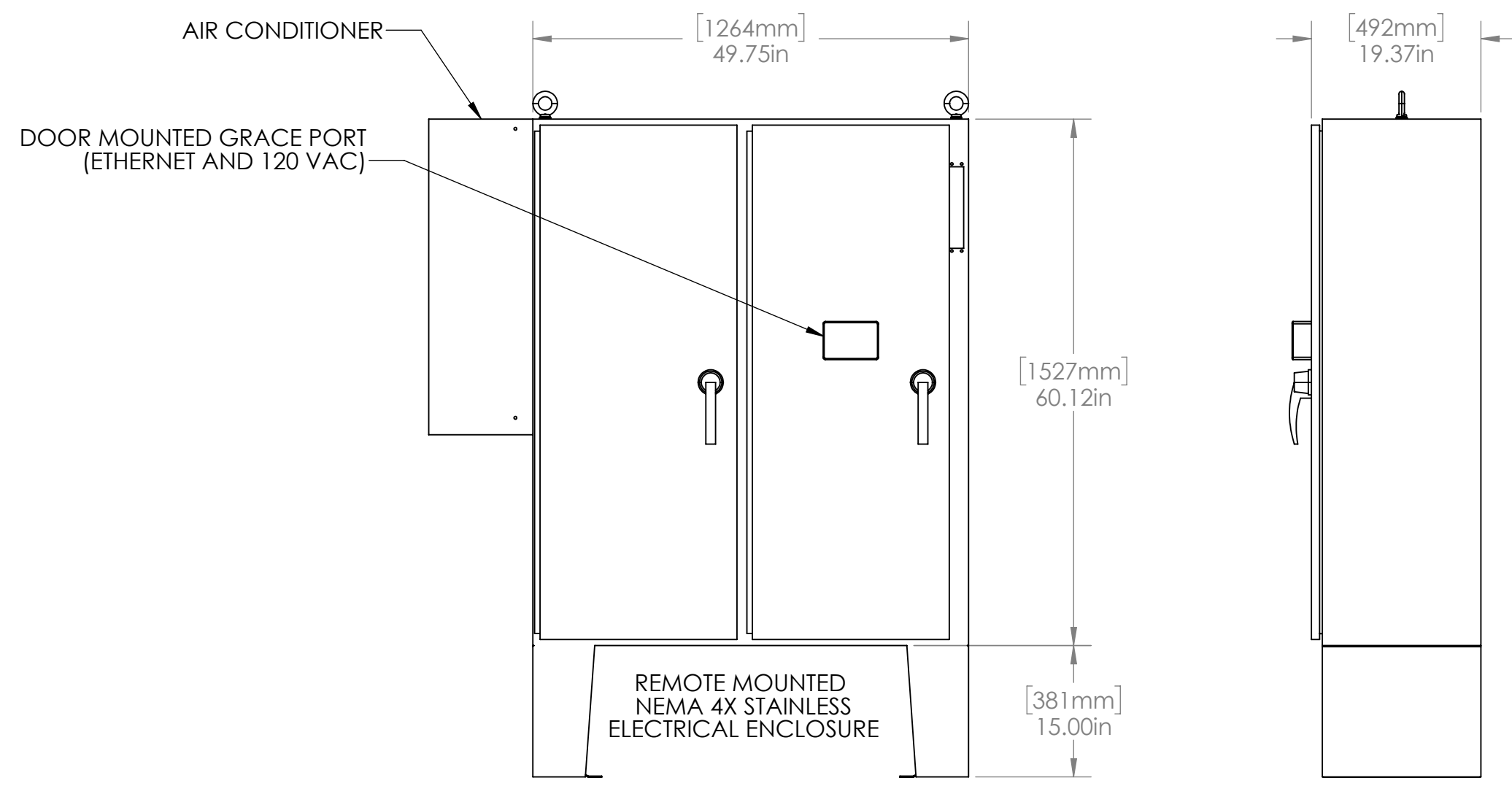
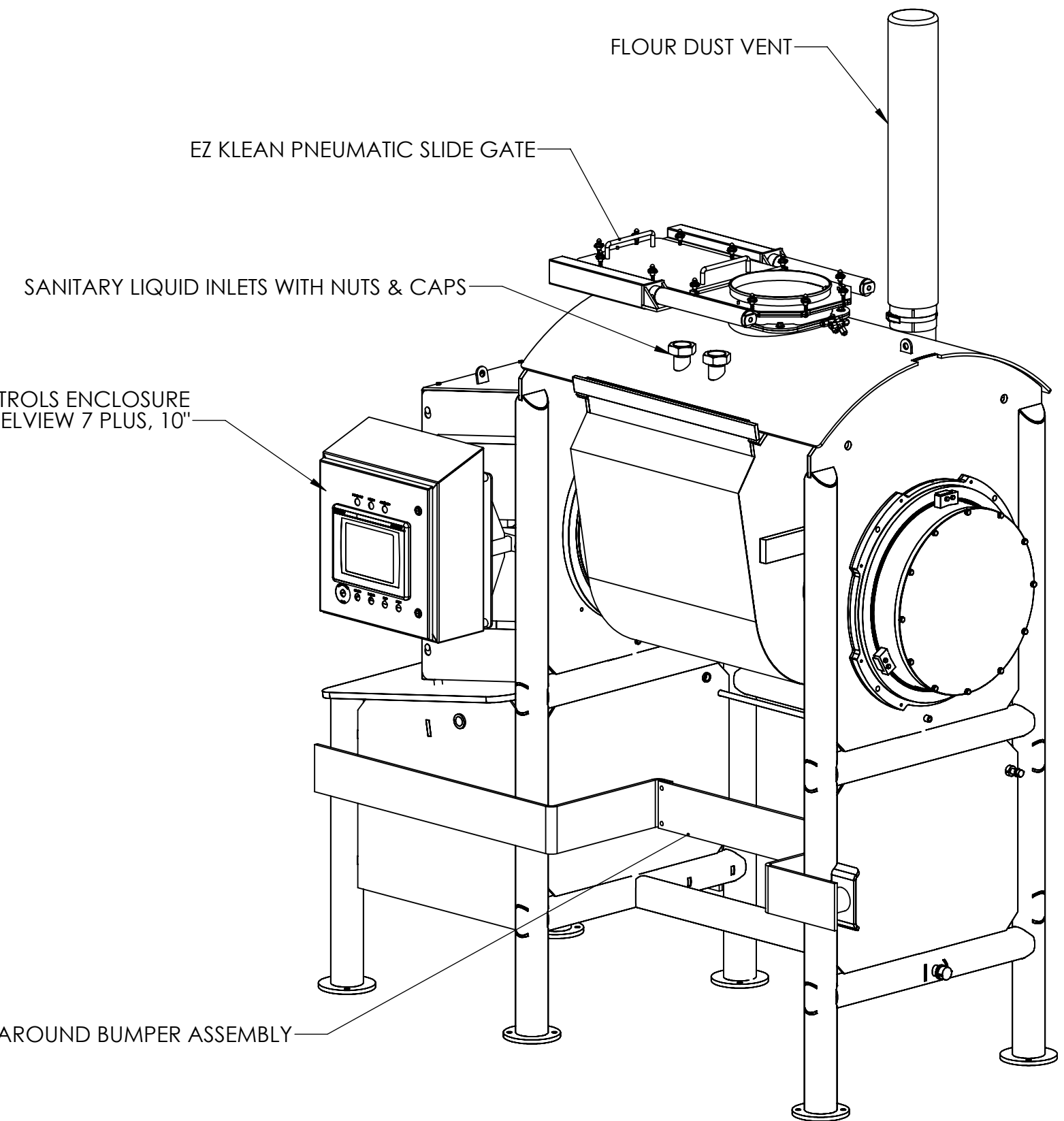
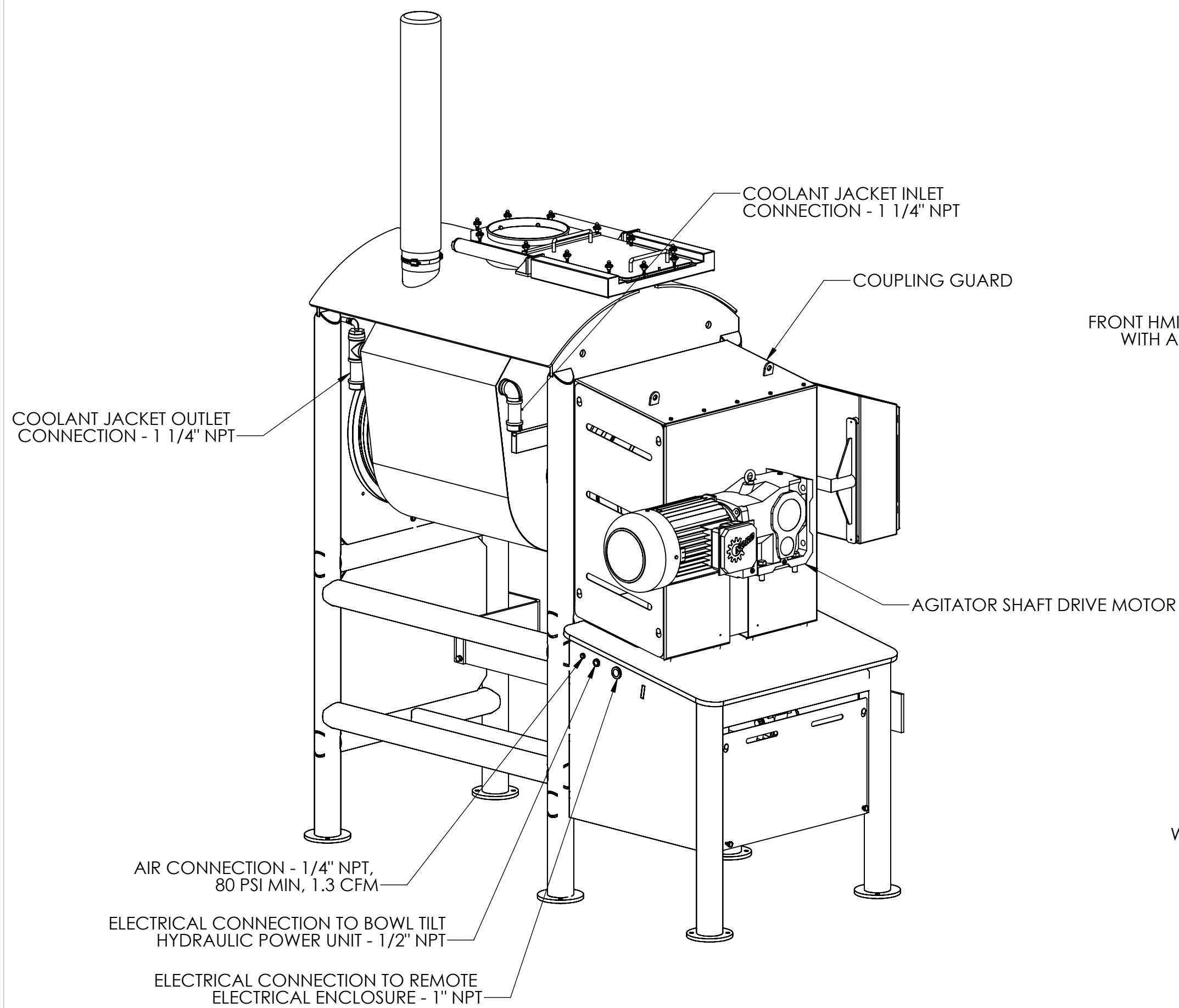
- APPROVED AS DRAWN. PROCEED WITH FABRICATION.
- APPROVED AS NOTED. REVISE AND PROCEED WITH FABRICATION.
- NOT APPROVED. REVISE AS NOTED AND RESUBMIT FOR APPROVAL.

SIGNED: _____
 DATE: _____

| | |
|---|---|
| REVISION LEVEL: 0 UNLESS OTHERWISE SPECIFIED Machining Tolerances: FXX ± .015 XX ± .030 X ± .075 Angles ± .1° Weldment / Fabrication Tolerances: Mill Thickness (1" or less) Length: 0-12 ± .020 12-36 ± .030 Over 36 ± .050 Mill Thickness (1" Length): 0-12 ± .030 12-36 ± .050 Over 36 ± .075 Dimensions Unless Otherwise Specified: Break All Sharp Corner Min = .005 / .015 2D Angle Projection All Machining To Be (250R) Max 2D Angle Projection Dimensions Shown in Inches DRAWN: _____ DATE: _____ R. Jacoby 4/12/2022 APPROVED: _____ DATE: _____ R. Jacoby 4/12/2022 | THE INFORMATION CONTAINED IN THIS DOCUMENT IS DISCLOSED IN CONFIDENCE AND IS THE EXCLUSIVE PROPERTY OF THE PEERLESS GROUP (PG). ANY DISCLOSURE, DISTRIBUTION, AND/OR REPRODUCTION IN PART OR WHOLE WITHOUT PERMISSION FROM PG IS PROHIBITED.  500 S. VANDEMARK ROAD SIDNEY, OH 45365-0769 937.492.4158 www.thepeerlessgroup.us MATERIAL: _____ DESCRIPTION: _____ SCALE: _____ PART: _____ SHEET: _____ 1:16 CDS219075 1 of 2 DRAWING SIZE: D |
|---|---|

PEERLESS MODEL DA50K-20 KLEANVUE DOUBLE ARM MIXER

P.O. NUMBER: _____



| | | | |
|---|--|--|--|
| REVISION LEVEL: 0 UNLESS OTHERWISE SPECIFIED Machining Tolerances .XXX ± .005 .XX ± .030 .X ± .125 Angles ± 1°25' Weldment / Fabrication Tolerances Mat'l Thickness (1" or less) Length 0 - 12 ± .030 12 - 36 ± .060 Over 36 ± .125 Mat'l Thickness (>1") Length 0 - 12 ± .060 12 - 36 ± .125 Over 36 ± .250 -Dimensions Apply After Finish -Break All Sharp Corners = .005 / .015 -Do Not Machine Stock Sizes -All Machining to Be 125(Ra) Max -3rd Angle Projection -Do Not Scale Drawing -Dimensions Shown in Inches MAT'L FINISH SPEC: | | THE INFORMATION CONTAINED IN THIS DOCUMENT IS DISCLOSED IN CONFIDENCE AND IS THE EXCLUSIVE PROPERTY OF PEERLESS FOOD EQUIPMENT. ANY DISCLOSURE, DISTRIBUTION, AND/OR REPRODUCTION IN PART OR WHOLE WITHOUT PERMISSION FROM PEERLESS IS PROHIBITED. | |
| DRAWN: R.Jacoby DATE: 4/12/2022 | | SCALE: 1:16 | |
| APPROVED: R.Jacoby DATE: 4/12/2022 | | PART: CDS219075 | |
| DRAWING SIZE: C | | SHEET: 2 of 2 | |

Peerless®
 Peerless Food Equipment
 ITW Food Equipment Group
 500 S. VANDEMARK ROAD
 SIDNEY, OH 45365-0769
 937.492.4158
 www.peerlessfood.com

CERTIFIED DATA SHEET

LOCATION: C:\Peerless_PDM_Vault\Engineering\Limited\CDS\2019\CDS219075
 SAVED DATE: 4/12/2022