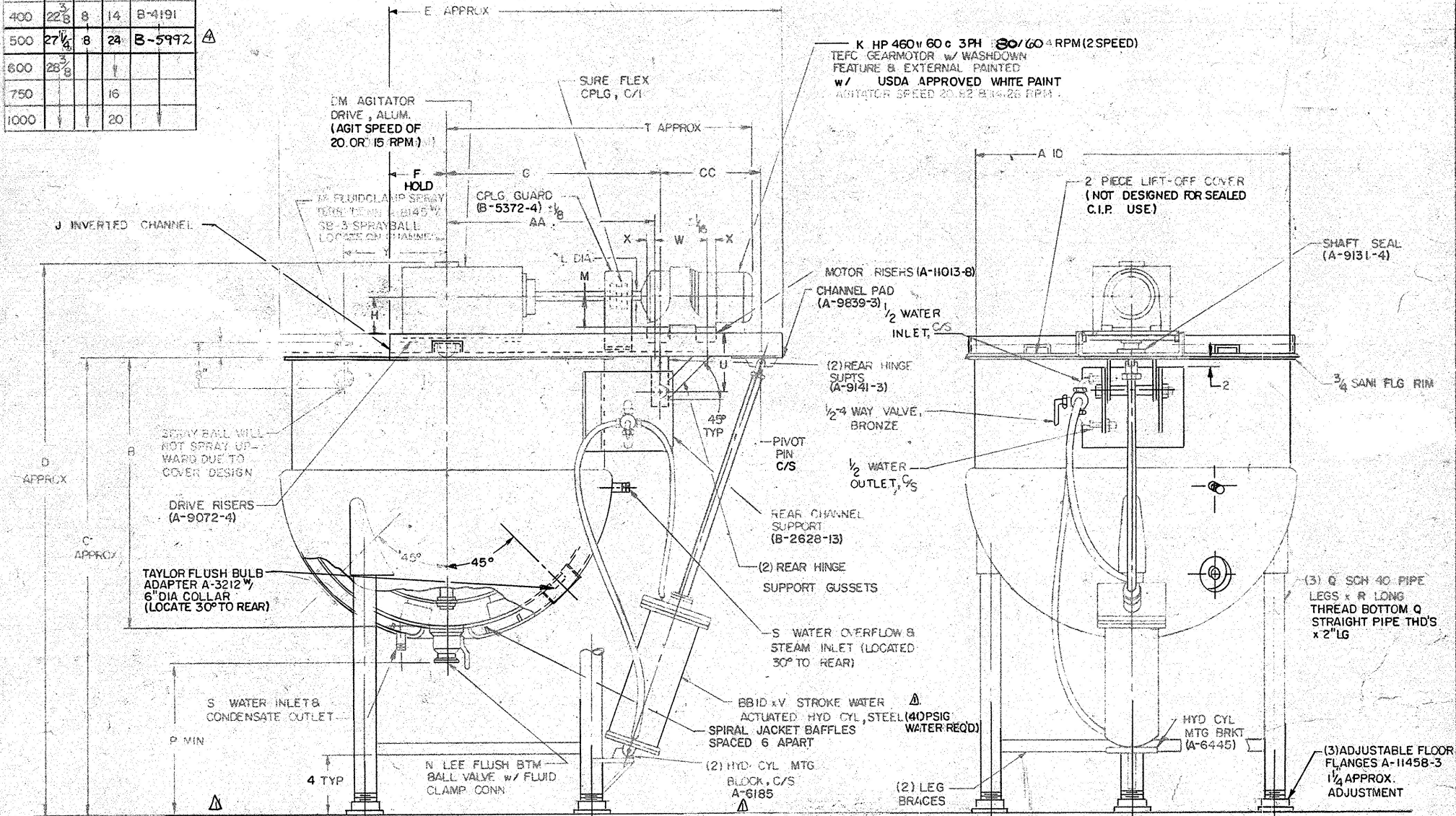


CAP	AA	BB	CC	COVER
400	22 <sup>3</sup> / <sub>8</sub>	8	14	B-4191
500	27 <sup>1</sup> / <sub>4</sub>	8	24	B-5992
600	25 <sup>3</sup> / <sub>8</sub>			
750			16	
1000			20	



KETTLE CAP	A	B	C	D	E	F	G	H	J	K	L	M	N	P	Q	R	S	T	U	V	W	X	Y	AGITATOR	TILT HEIGHT
400	58	47	67 <sup>3</sup> / <sub>16</sub>	83 <sup>1</sup> / <sub>8</sub>	82 <sup>5</sup> / <sub>8</sub>	30 <sup>1</sup> / <sub>8</sub>	36 <sup>1</sup> / <sub>2</sub>	4 <sup>3</sup> / <sub>4</sub>	17	5	1 <sup>5</sup> / <sub>8</sub>	5 <sup>1</sup> / <sub>2</sub>	2	15	3	36 <sup>11</sup> / <sub>16</sub>	1 <sup>1</sup> / <sub>2</sub>	41 <sup>7</sup> / <sub>8</sub>	10 <sup>1</sup> / <sub>2</sub>	14	8 <sup>1</sup> / <sub>16</sub>	25 <sup>3</sup> / <sub>32</sub>	B-2148	131 APPROX	
500	62	57	82 <sup>1</sup> / <sub>16</sub>	99 <sup>13</sup> / <sub>16</sub>	77 <sup>1</sup> / <sub>4</sub>	11 <sup>3</sup> / <sub>4</sub>	39 <sup>1</sup> / <sub>2</sub>	5 <sup>3</sup> / <sub>4</sub>	21	5 <sup>1</sup> / <sub>2</sub>	1 <sup>7</sup> / <sub>8</sub>	5 <sup>7</sup> / <sub>8</sub>	3	18		44		53	24	5 <sup>3</sup> / <sub>4</sub>	1	21 <sup>1</sup> / <sub>2</sub>	B-5864	128 MAX	
600	66	54	76 <sup>1</sup> / <sub>16</sub>	93 <sup>3</sup> / <sub>8</sub>	91 <sup>3</sup> / <sub>8</sub>	34 <sup>1</sup> / <sub>8</sub>	41 <sup>1</sup> / <sub>2</sub>			7 <sup>1</sup> / <sub>2</sub>	2 <sup>3</sup> / <sub>8</sub>	7 <sup>1</sup> / <sub>16</sub>	3			43 <sup>1</sup> / <sub>16</sub>	2	52 <sup>1</sup> / <sub>4</sub>		10 <sup>1</sup> / <sub>4</sub>	1		B-2395	144	
750	68	62	84 <sup>1</sup> / <sub>16</sub>	101 <sup>1</sup> / <sub>8</sub>	95 <sup>5</sup> / <sub>8</sub>	35 <sup>1</sup> / <sub>8</sub>	42 <sup>1</sup> / <sub>2</sub>									44 <sup>1</sup> / <sub>16</sub>			17	20					154
1000	72	72	94 <sup>1</sup> / <sub>16</sub>	111 <sup>7</sup> / <sub>8</sub>	103 <sup>1</sup> / <sub>8</sub>	37 <sup>1</sup> / <sub>8</sub>	44									46 <sup>1</sup> / <sub>16</sub>			21	27				B-2416	165

REV. PER SUPP. II 6-13-88 SH

NOTES: 1. UNIT MUST BE BOLTED TO FLOOR BEFORE OPERATING  
 2. ALL MAT'L. S.S. UNLESS OTHERWISE NOTED  
 3. MAX TILT HEIGHT NOT EXCEED 120"

DELETED SPRAYBALL ADDED 3" FLUID CLAMP FERRULE 40 PSI WAS 60 PSI 5-17-88 SH

**LEE** LEE PROCESS SYSTEMS CO.  
 DIVISION OF LEE INDUSTRIES INC  
 PHILIPSBURG PA

500 GALLON STYLE "DSMT" KETTLE	
SCALE: NONE	DATE: 4-25-88
DRAWN BY: MAX	DRAWING NO. C-3096
APPROVED BY: J E B	REV. 5

ADDED 6" TO LEG LG, UNDER OUTLET, 40" A.H. 6-22-88 EL

B-5992 WAS B-5952 8-12-88 SH

REV. COVER PER SUPP. 16 CUST APPROVAL