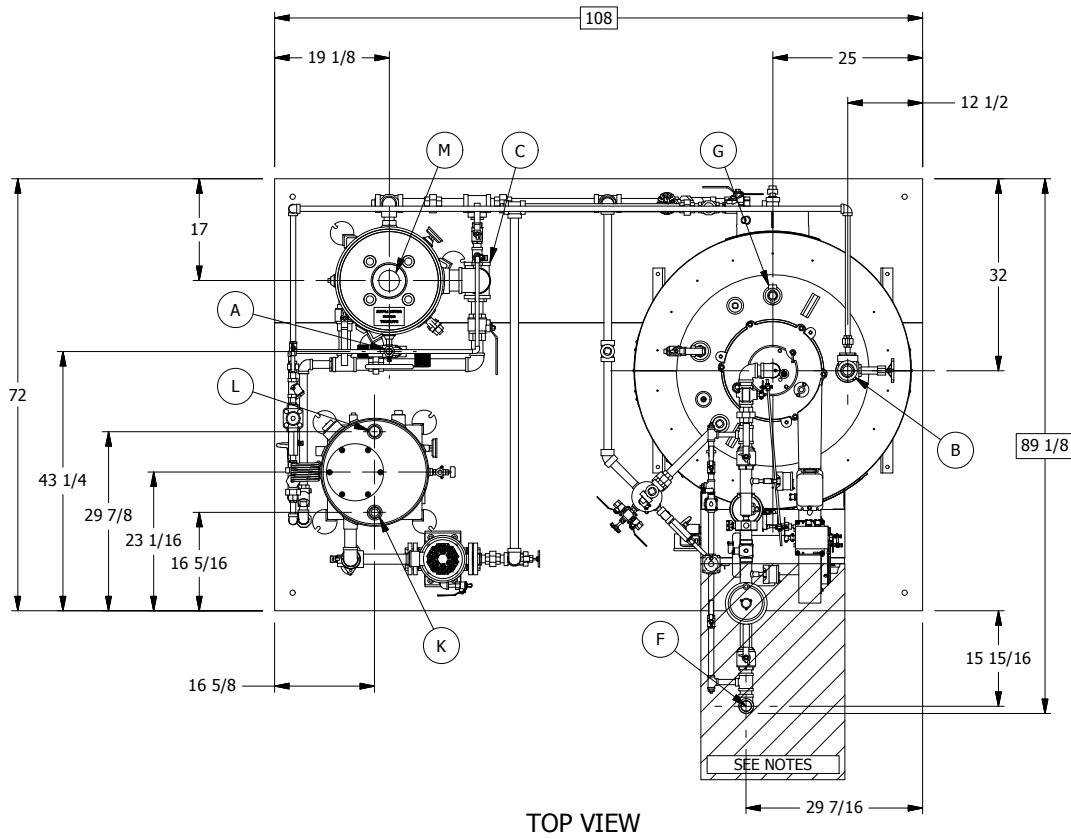
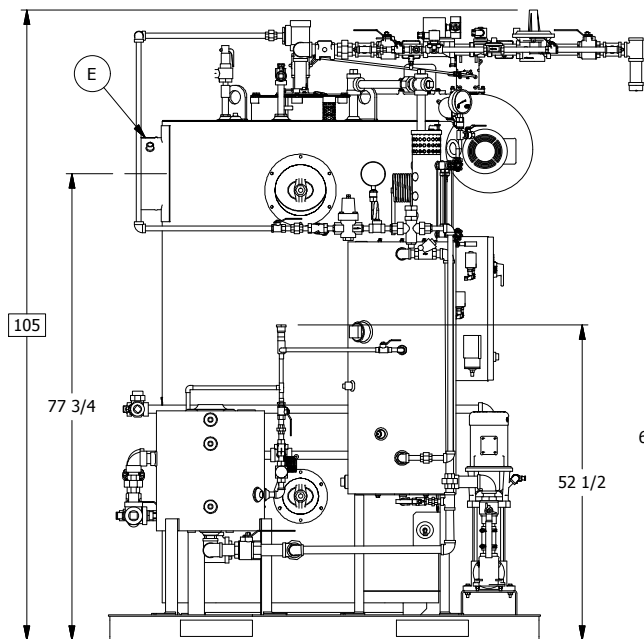


- NOTES:
1. ALL CLEARANCES ARE FACTORY RECOMMENDATIONS. CONSULT LOCAL JURISDICTION FOR EXACT CODE COMPLIANCE.
 2. FULTON RECOMMENDS MINIMUM CLEARANCE OF 36" IN FRONT OF ELECTRICAL PANELS.
 3. FULTON RECOMMENDS 36" CLEARANCE BETWEEN INSPECTION OPENINGS OF ALL BOILERS.
 4. LOCAL CODE OR SEISMIC RESTRAINT MAY REQUIRE ADDITIONAL FIELD SUPPORTS. THESE SUPPORTS ARE TO BE ADDED IN THE FIELD BY OTHERS.
 5. ALL MAJOR COMPONENTS TO BE PLACED WHERE DEPICTED AND SQUARED TO THE SKID UNLESS OTHERWISE NOTED.
 6. PLEASE REFER TO THE O&M MANUAL FOR ADDITIONAL INFORMATION REGARDING CLEARANCES AND INSTALLATION INSTRUCTIONS.
 7. OVERALL FOOTPRINT OF SYSTEM IS FOR REFERENCE ONLY AND IS SUBJECT TO CHANGE. FULTON RESERVES THE RIGHT TO CHANGE OVERALL DIMENSIONS OF FOOTPRINT IF NEEDED FOR MANUFACTURING PURPOSES.
 8. ALL DIMENSIONS INSIDE () DENOTE REFERENCE DIMENSIONS.
 9. ALL DIMENSIONS INSIDE □ DENOTE OVERALL DIMENSIONS.

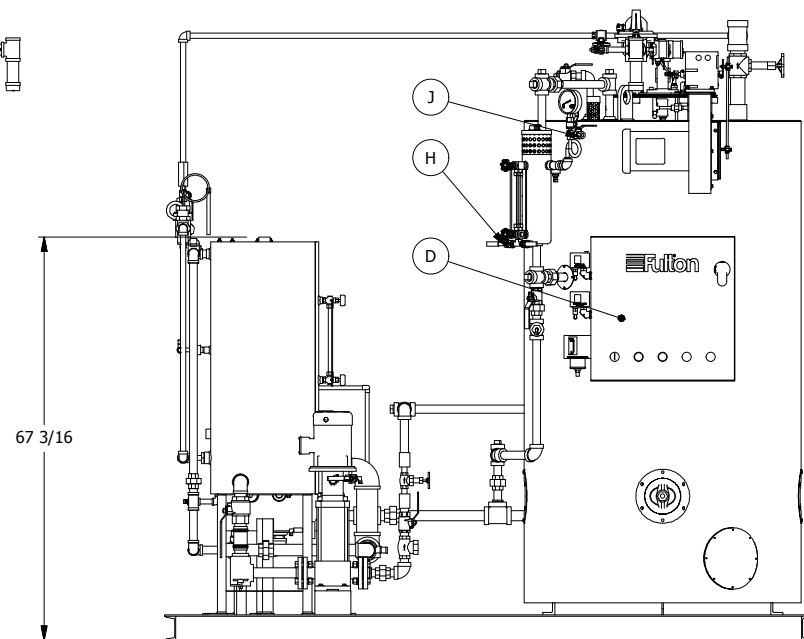


CUSTOMER CONNECTIONS				
ITEM	DESCRIPTION	SIZE	TYPE	SHIPPED LOOSE
A	SINGLE SOURCE WATER	1"	N.P.T.	
B	SINGLE SOURCE STEAM	2"	N.P.T.	*
C	SINGLE SOURCE DRAIN	3"	N.P.T.	
D	SINGLE SOURCE POWER	---	---	
E	EXHAUST STACK	12"	---	*
F	FUEL INLET	1 1/2"	N.P.T.	*
G	SAFETY RELIEF VALVE	3/4"	N.P.T.	*
H	WATER SAMPLE PORT	1/4"	N.P.T.	
J	STEAM SAMPLE PORT	1/4"	N.P.T.	
K	CONDENSATE RETURN	1 1/4"	N.P.T.	
L	RETURN TANK VENT	1 1/4"	N.P.T.	
M	BLOWOFF SEPARATOR VENT	3"	N.P.T.	

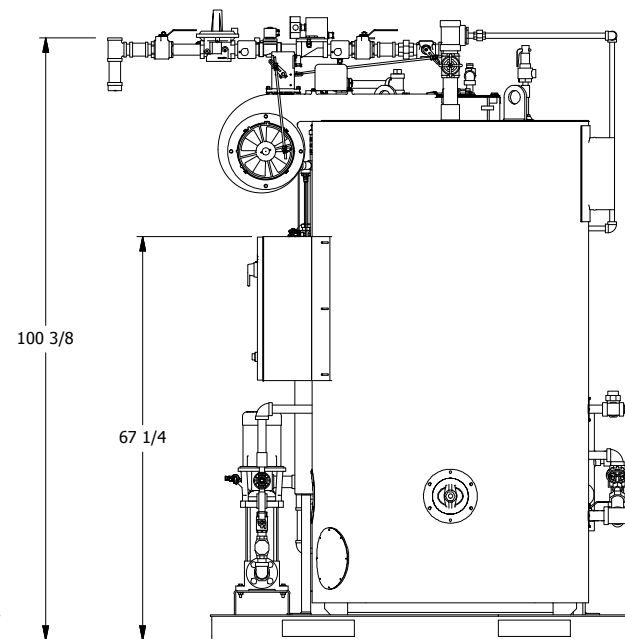
EQUIPMENT SPECIFICATION CHART	
APPROXIMATE OPERATING WEIGHT:	9000 LBS.
APPROX. WEIGHT SKID #1	6900 LBS
BOILER DRAWING NO:	B91-5768
FEED WATER DRAWING NO:	B91-5769
BLOWOFF SEPARATOR DRAWING NO:	9-BD-0030A3



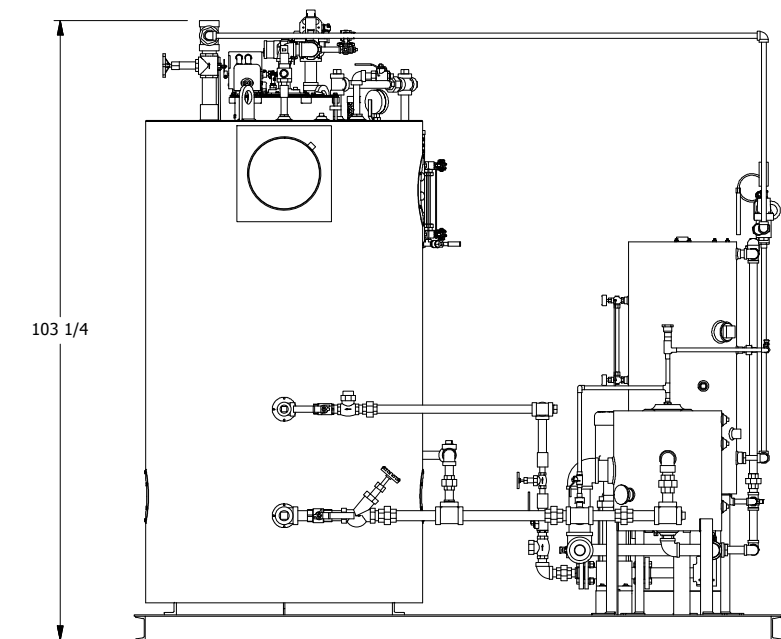
LEFT SIDE VIEW



FRONT VIEW



RIGHT SIDE VIEW



BACK VIEW

REV	REVISION DESCRIPTION	B.O.M.	ELEC. ENG	MECH. ENG	CHECKED	APPROVED
-	- INITIAL RELEASE -					
REVISION HISTORY						

UNLESS OTHERWISE NOTED: DIMENSIONS ARE IN INCHES TOLERANCES ON FRACTIONS ± 1/4 (2) PLACE DEC. ± .01 (3) PLACE DEC. ± .005 ANGLES ± 2 DEG. SURFACE FINISH 250 MICRO-INCHES

This design and drawings are proprietary and are the exclusive property of The Fulton Companies. The corporation does not permit their use except with prior written consent.

The items shown in this drawing may be covered by one or more patents of The Fulton Companies.

THIRD ANGLE PROJECTION
1 OF 8

DRAWN BY: T. KENNEDY	8/10/2015	MECH. ENG: W.W.	8/18/2015	JOB NUMBER: 507601
CHECKED BY: S.A.C.	8/21/2015	ELEC. ENG: J.E.S.	8/20/2015	PROJECT NAME: NASSAU CANDY FACTORY
B.O.M. REVIEW N/A		APPROVED BY: J.B.	8/19/2015	PROJECT MANAGER: J. ASHBY

DESCRIPTION:
ICS 30 H.P. STEAM BOILER WITH F-30 BLOWOFF SEPARATOR AND VT-30 SIMPLEX RETURN SYSTEM

The Fulton Companies
972 Centerville Road
Pulaski, New York USA 13142

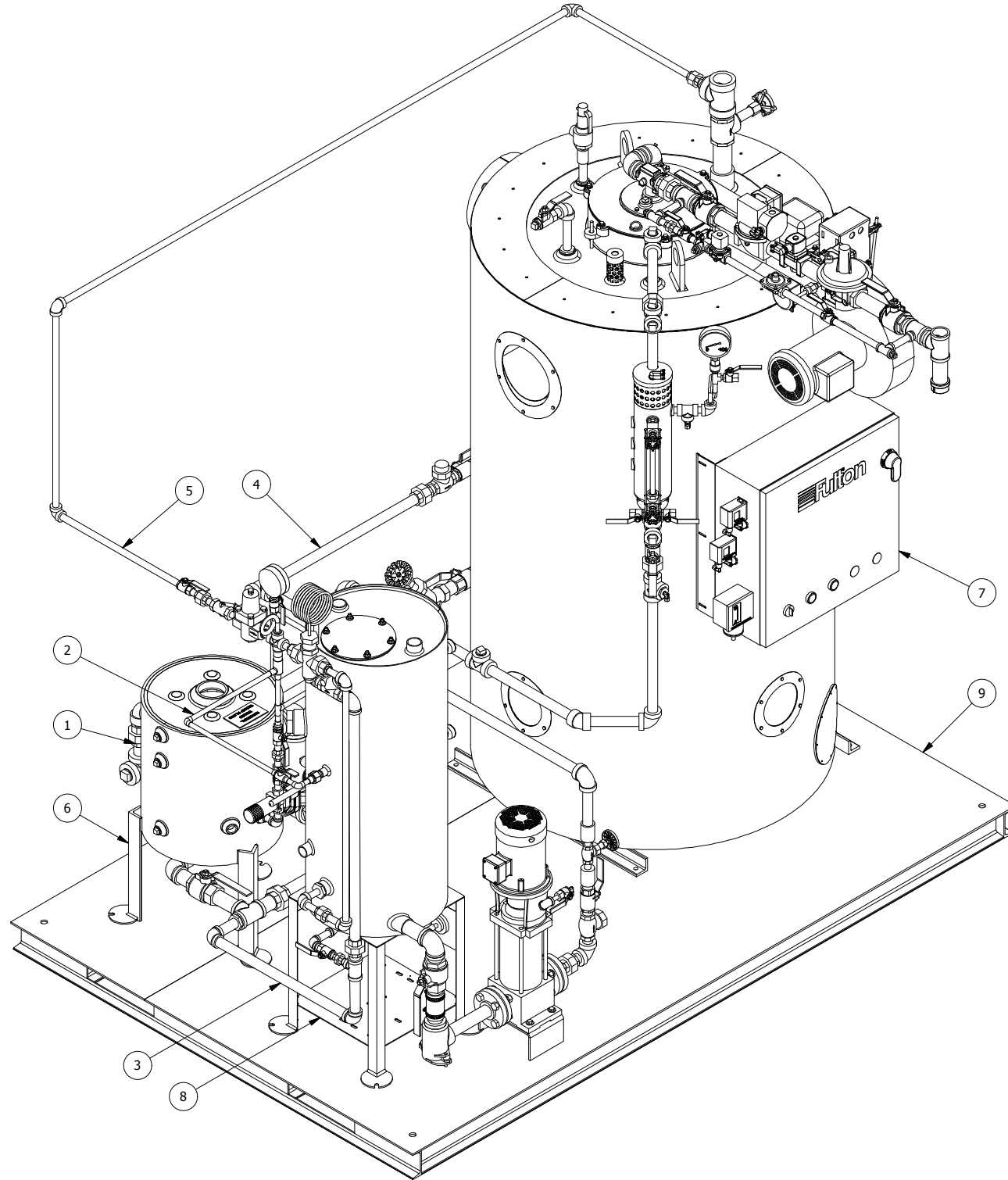
DRAWING NUMBER:
B99-2296

SHEET 1 OF 8

REV
-

MANUFACTURING B. O. M.

ITEM	PART NUMBER	REV	DESCRIPTION	QTY	U.O.M.
1	0-BD-ASSY01		BLOWDOWN PIPING ASSEMBLY	1	EA.
2	0-CW-ASSY01		COLD WATER PIPING ASSEMBLY	1	EA.
3	0-DR-ASSY01		DRAIN PIPING ASSEMBLY	1	EA.
4	0-FW-ASSY01		FEEDWATER PIPING ASSEMBLY	1	EA.
5	0-PH-ASSY01		PREHEAT PIPING ASSEMBLY	1	EA.
6	9-BD-0030A3		F-30 BLOW-OFF SEPARATOR WITH COOLING KIT (75 PSIG MAWP)	1	EA.
7	B91-5768		ICS 30 HP HIGH PRESSURE GAS FIRED MODULATED BOILER (TRIM 200 PSI)	1	EA.
8	B91-5769		VT-30 RETURN TANK WITH SIMPLEX GOULDS PUMP AND STANDARD MECHANICAL FLOAT	1	EA.
9	WORK ORDER		72" X 108" SKID ASSEMBLY	1	EA.



ISOMETRIC VIEW

-	- INITIAL RELEASE -					
REV	REVISION DESCRIPTION	B.O.M.	ELEC. ENG	MECH. ENG	CHECKED	APPROVED
REVISION HISTORY						

UNLESS OTHERWISE NOTED:
 DIMENSIONS ARE IN INCHES
 TOLERANCES ON:
 FRACTIONS ± 1/4
 (2) PLACE DEC. ± .01
 (3) PLACE DEC. ± .005
 ANGLES ± 2 DEG.
 SURFACE FINISH 250 MICRO-INCHES

This design and drawings are proprietary and are the exclusive property of The Fulton Companies. The corporation does not permit their use except with prior written consent.

The items shown in this drawing may be covered by one or more patents of The Fulton Companies.

DRAWN BY: T. KENNEDY 8/10/2015
 MECH. ENG: W.W. 8/18/2015
 JOB NUMBER: 507601

CHECKED BY: S.A.C. 8/21/2015
 ELEC. ENG: J.E.S. 8/20/2015
 PROJECT NAME: NASSAU CANDY FACTORY

B.O.M. REVIEW: N/A
 APPROVED BY: J.B. 8/19/2015
 PROJECT MANAGER: J. ASHBY

DESCRIPTION: ICS 30 H.P. STEAM BOILER WITH F-30 BLOWOFF SEPARATOR AND VT-30 SIMPLEX RETURN SYSTEM

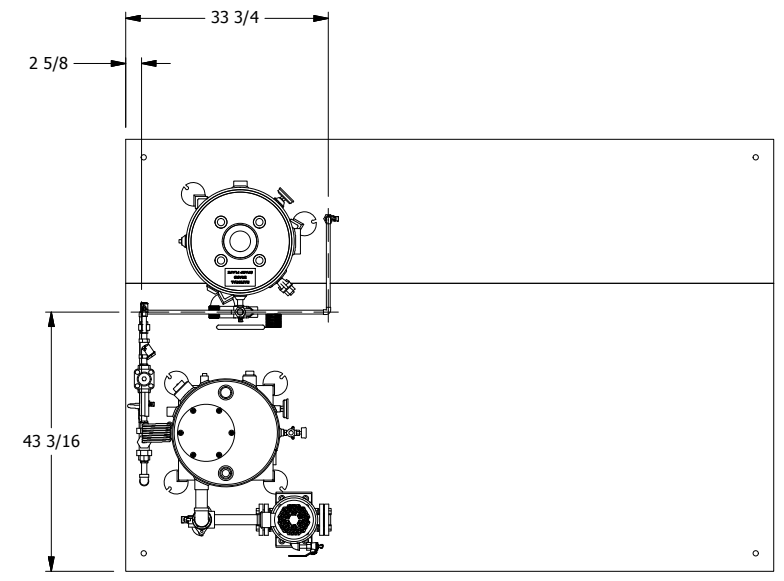
The Fulton Companies
 972 Centerville Road
 Pulaski, New York USA 13142

DRAWING NUMBER: B99-2296
 REV: -

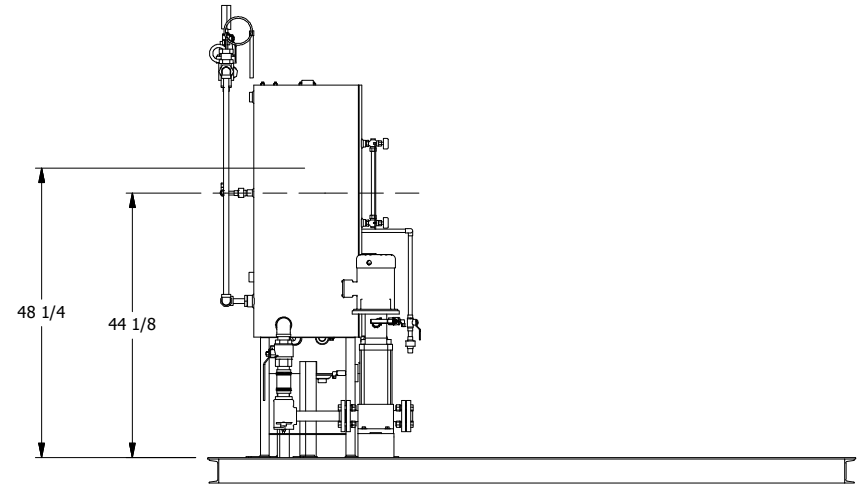
SHEET 2 OF 8

MANUFACTURING B. O. M.

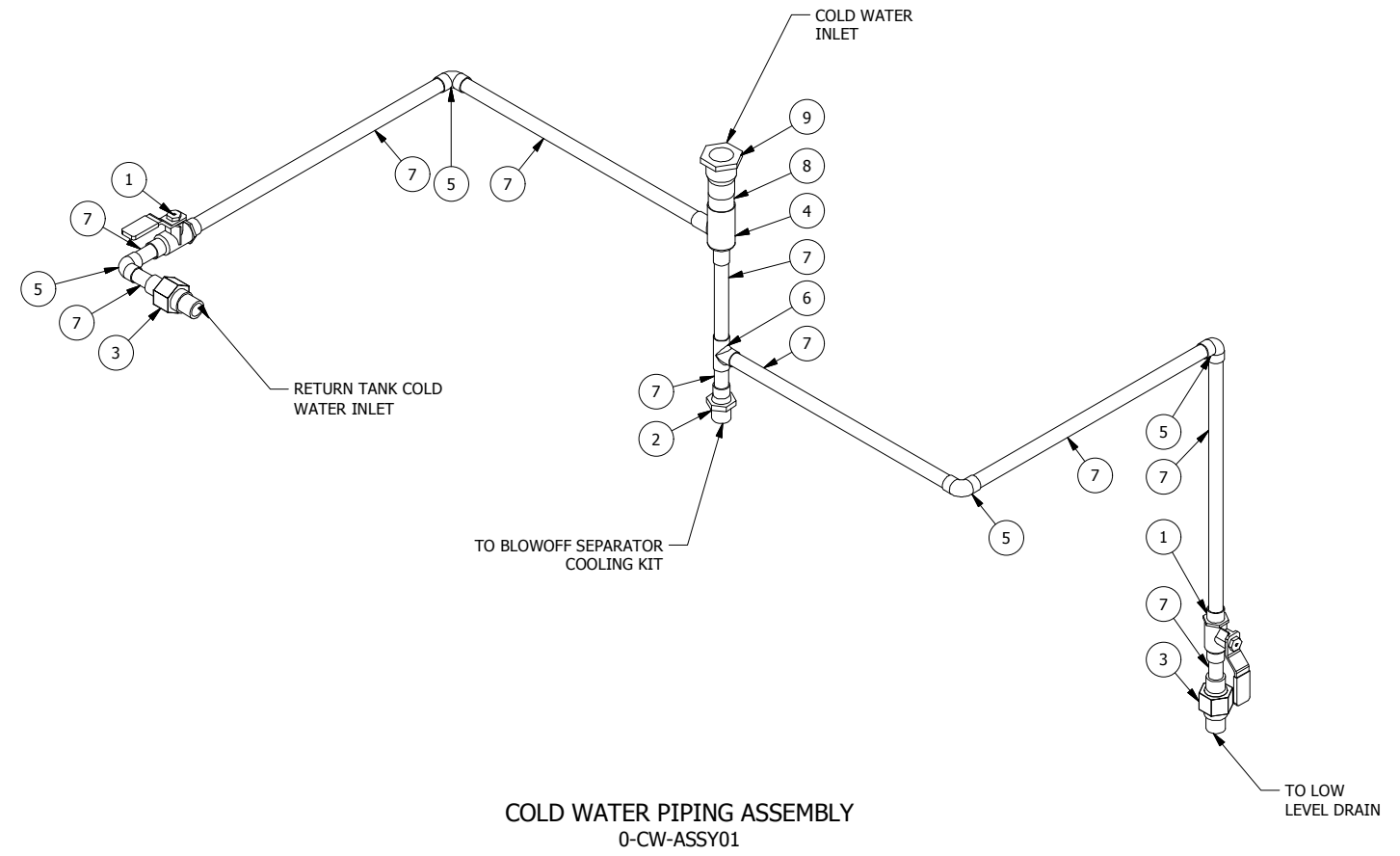
ITEM	PART NUMBER	REV	DESCRIPTION	QTY	U.O.M.
1	2-30-005027		1/2" SOLDER END BRONZE BALL VALVE (70-203-01)	2	EA.
2	2-35-001146		1/2" MNPT X 1/2" TYPE-L SOLDER COPPER ADAPTER	1	EA.
3	2-35-001249		1/2" SOLDER TO 1/2" MALE N.P.T. DIELECTRIC UNION	2	EA.
4	2-35-001259		1" X 1/2" X 1/2" TYPE-L COPPER REDUCING TEE	1	EA.
5	2-35-001300		1/2" TYPE-L COPPER ELBOW	4	EA.
6	2-35-001305		1/2" COPPER TEE	1	EA.
7	2-35-001315		1/2" TYPE-L COPPER TUBING	7.43	FT.
8	2-35-001317		1" TYPE-L COPPER TUBING	.17	FT.
9	2-35-001321		1" FEMALE NPT X 1" TYPE-L SOLDER COPPER ADAPTER	1	EA.



TOP VIEW



FRONT VIEW



COLD WATER PIPING ASSEMBLY
0-CW-ASSY01

- INITIAL RELEASE -					
REV	REVISION DESCRIPTION	B.O.M.	ELEC. ENG	MECH. ENG	APPROVED
REVISION HISTORY					

UNLESS OTHERWISE NOTED:
DIMENSIONS ARE IN INCHES
TOLERANCES ON:
FRACTIONS ± 1/4
(2) PLACE DEC. ± .01
(3) PLACE DEC. ± .005
ANGLES ± 2 DEG.
SURFACE FINISH
250 MICRO-INCHES

This design and drawings are proprietary and are the exclusive property of The Fulton Companies. The corporation does not permit their use except with prior written consent.

The items shown in this drawing may be covered by one or more patents of The Fulton Companies.

DRAWN BY: T. KENNEDY	8/10/2015	MECH. ENG: W.W.	8/18/2015	JOB NUMBER: 507601
CHECKED BY: S.A.C.	8/21/2015	ELEC. ENG: J.E.S.	8/20/2015	PROJECT NAME: NASSAU CANDY FACTORY
B.O.M. REVIEW N/A		APPROVED BY: J.B.	8/19/2015	PROJECT MANAGER: J. ASHBY

DESCRIPTION:
ICS 30 H.P. STEAM BOILER WITH F-30 BLOWOFF
SEPARATOR AND VT-30 SIMPLEX RETURN SYSTEM

SHEET 3 OF 8

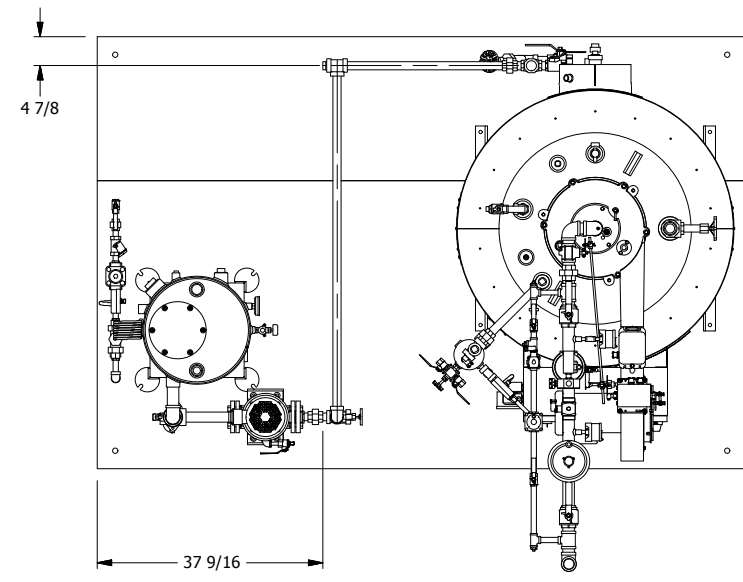
The Fulton Companies
972 Centerville Road
Pulaski, New York USA 13142

DRAWING NUMBER:
B99-2296

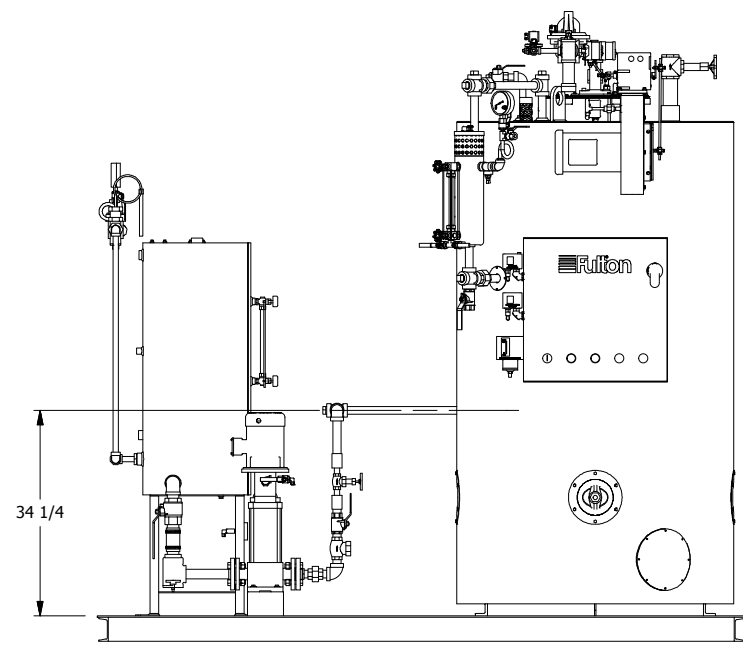
REV
-

MANUFACTURING B. O. M.

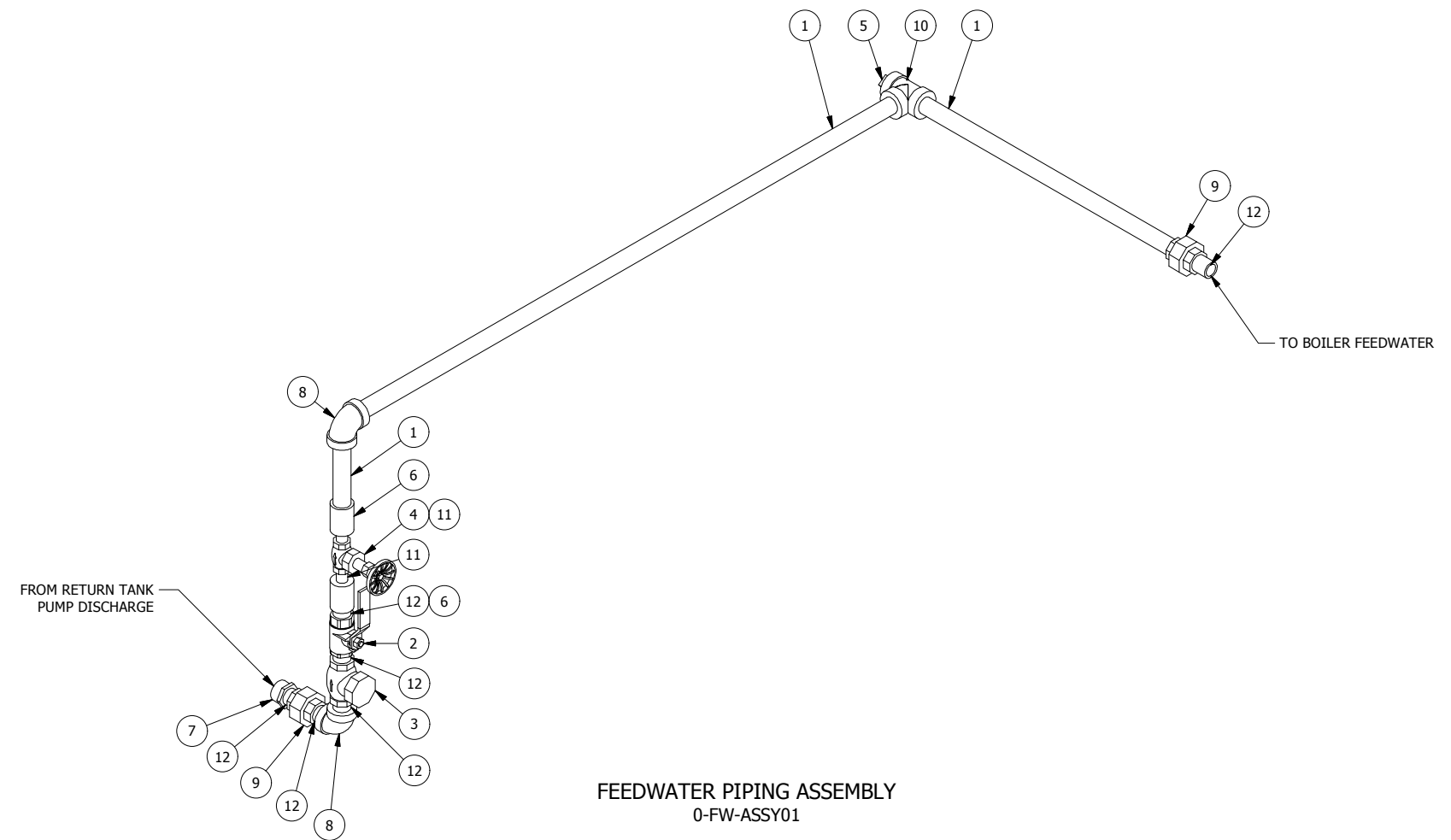
ITEM	PART NUMBER	REV	DESCRIPTION	QTY	U.O.M.
1	1-10-000026		1" SCH. 80 PIPE	7.48	FT.
2	2-30-000026		1" REDUCED PORT BALL VALVE	1	EA.
3	2-30-000396		1" SPRING CHECK VALVE	1	EA.
4	2-30-000722		1/2" GLOBE VALVE	1	EA.
5	2-35-000309		1" 3000# PLUG	1	EA.
6	2-35-000369		1" X 1/2" 3000# REDUCING COUPLING	2	EA.
7	2-35-000661		1 1/4" X 1" 3000# BUSHING	1	EA.
8	2-35-000712		1" 3000# ELBOW	2	EA.
9	2-35-000716		1" 3000# UNION	2	EA.
10	2-35-000720		1" 3000# THREADED TEE	1	EA.
11	2-35-000768		1/2" X 2" - NPT SCH 80 SEAMLESS NIPPLE (SA-106 - PIP205 - CERTIFIED)	2	EA.
12	2-35-000899		1" X 2" - NPT SCH 80 SEAMLESS NIPPLE (SA-106 - PIP205 - CERTIFIED)	6	EA.



TOP VIEW



FRONT VIEW



FEEDWATER PIPING ASSEMBLY
0-FW-ASSY01

- INITIAL RELEASE -					
REV	REVISION DESCRIPTION	B.O.M.	ELEC. ENG	MECH. ENG	APPROVED
REVISION HISTORY					

UNLESS OTHERWISE NOTED:
DIMENSIONS ARE IN INCHES
TOLERANCES ON:
FRACTIONS ± 1/4
(2) PLACE DEC. ± .01
(3) PLACE DEC. ± .005
ANGLES ± 2 DEG.
SURFACE FINISH
250 MICRO-INCHES

This design and drawings are proprietary and are the exclusive property of The Fulton Companies. The corporation does not permit their use except with prior written consent.

The items shown in this drawing may be covered by one or more patents of The Fulton Companies.

THIRD ANGLE PROJECTION
4 OF 8

DRAWN BY:
T. KENNEDY
8/10/2015

CHECKED BY:
S.A.C.
8/21/2015

B.O.M. REVIEW
N/A

MECH. ENG:
W.W.
8/18/2015

ELEC. ENG:
J.E.S.
8/20/2015

APPROVED BY:
J.B.
8/19/2015

JOB NUMBER:
507601

PROJECT NAME:
NASSAU CANDY FACTORY

PROJECT MANAGER:
J. ASHBY

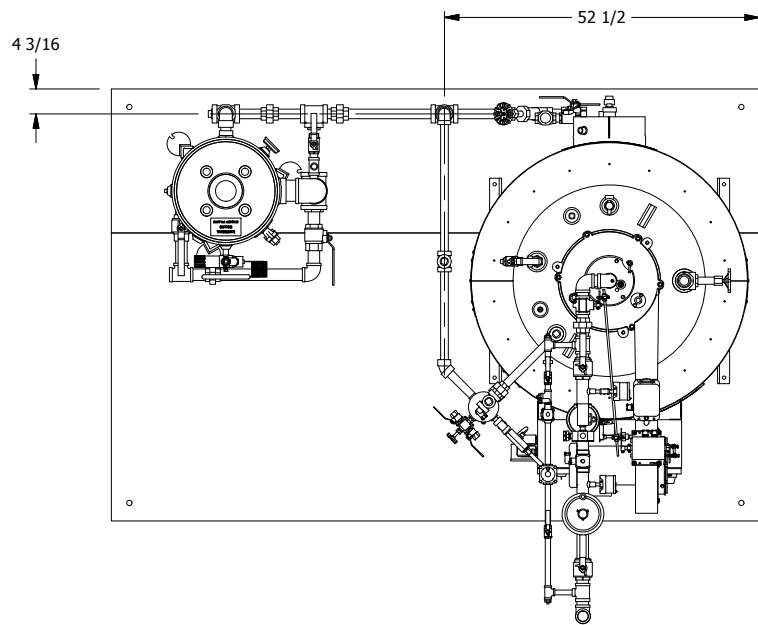
DESCRIPTION:
ICS 30 H.P. STEAM BOILER WITH F-30 BLOWOFF
SEPARATOR AND VT-30 SIMPLEX RETURN SYSTEM

SHEET 4 OF 8

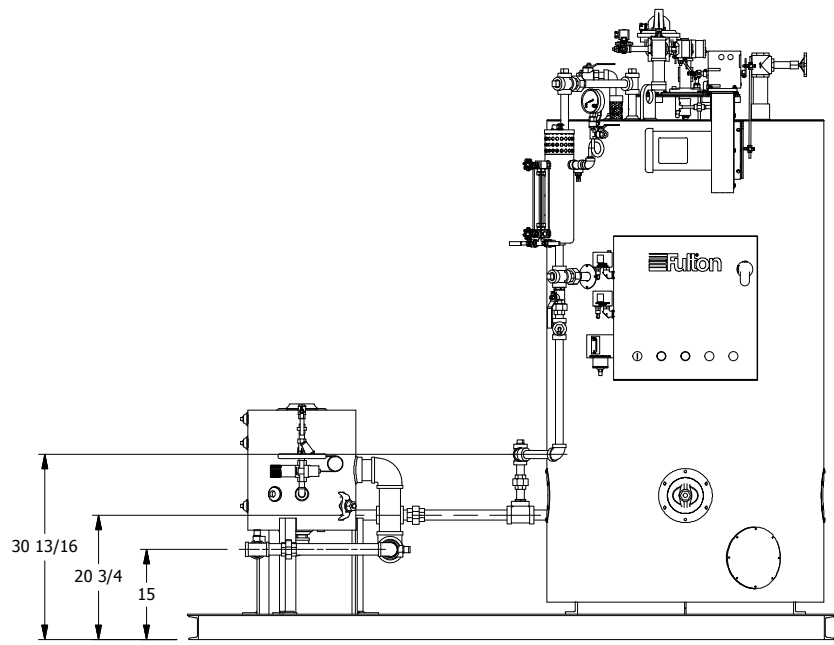
The Fulton Companies
972 Centerville Road
Pulaski, New York USA 13142

DRAWING NUMBER:
B99-2296

REV
-

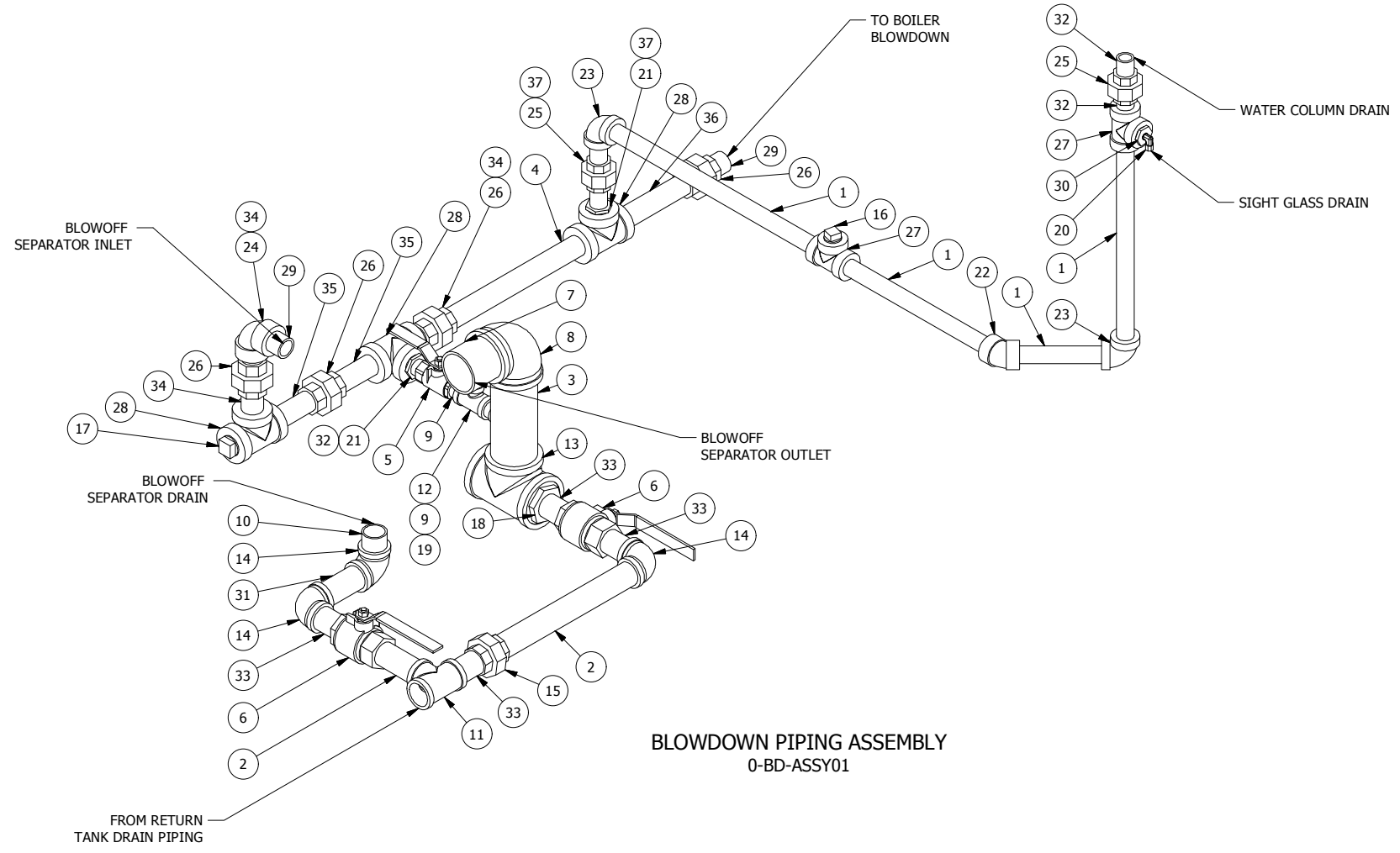


TOP VIEW



FRONT VIEW

MANUFACTURING B. O. M.						MANUFACTURING B. O. M.					
ITEM	PART NUMBER	REV	DESCRIPTION	QTY	U.O.M.	ITEM	PART NUMBER	REV	DESCRIPTION	QTY	U.O.M.
1	1-10-00026		1" SCH. 80 PIPE	5.394	FT.	20	2-35-000516		1/4" N.P.T. X 3/8" COMPRESSION BRASS ELBOW	1	EA.
2	2-10-000111		1 1/2" SCH. 40 PIPE	1.68	FT.	21	2-35-000661		1 1/4" X 1" 3000# BUSHING	2	EA.
3	2-10-000114		3" SCH. 40 PIPE	.8	FT.	22	2-35-000671		1" 3000# 45 DEG ELBOW	1	EA.
4	2-10-000117		1 1/4" SCH. 80 PIPE	1.26	FT.	23	2-35-000712		1" 3000# ELBOW	2	EA.
5	2-30-000026		1" REDUCED PORT BALL VALVE	1	EA.	24	2-35-000713		1 1/4" 3000# ELBOW	1	EA.
6	2-30-005059		1 1/2" FULL PORT BALL VALVE	2	EA.	25	2-35-000716		1" 3000# UNION	2	EA.
7	2-35-000055		3" X 4" - NPT SCH 40 NIPPLE	1	EA.	26	2-35-000717		1 1/4" 3000# UNION	4	EA.
8	2-35-000074		3" THREADED ELBOW	1	EA.	27	2-35-000720		1" 3000# THREADED TEE	2	EA.
9	2-35-000129		1" X 2" - NPT SCH 40 NIPPLE	2	EA.	28	2-35-000721		1 1/4" 3000# THREADED TEE	3	EA.
10	2-35-000149		1 1/2" X 2" - NPT SCH 40 NIPPLE	1	EA.	29	2-35-000758		1 1/4" X 2" - NPT SCH 80 SEAMLESS NIPPLE (SA-106 - PIP205 - CERTIFIED)	3	EA.
11	2-35-000225		1 1/2" THREADED TEE	1	EA.	30	2-35-000790		1" X 1/4" 3000# BUSHING	1	EA.
12	2-35-000238		1" X 1" X 1/2" THREADED REDUCING TEE	1	EA.	31	2-35-000804		1 1/2" X 5" - NPT SCH 40 NIPPLE	1	EA.
13	2-35-000244		3" THREADED TEE	1	EA.	32	2-35-000899		1" X 2" - NPT SCH 80 SEAMLESS NIPPLE (SA-106 - PIP205 - CERTIFIED)	3	EA.
14	2-35-000274		1 1/2" THREADED ELBOW	3	EA.	33	2-35-001441		1 1/2" X 3 1/2" - NPT SCH 40 NIPPLE	4	EA.
15	2-35-000296		1 1/2" SCH. 40 UNION	1	EA.	34	PO#		1 1/4" X 3" - NPT SCH 80 SEAMLESS NIPPLE	2	EA.
16	2-35-000309		1" 3000# PLUG	1	EA.	35	PO#		1 1/4" X 5" - NPT SCH 80 SEAMLESS NIPPLE	2	EA.
17	2-35-000310		1 1/4" 3000# PLUG	1	EA.	36	PO#		1 1/4" X 8" - NPT SCH 80 SEAMLESS NIPPLE	1	EA.
18	2-35-000498		3" X 1 1/2" 150# BUSHING	1	EA.	37	PO#		1" X 3" - NPT SCH 80 SEAMLESS NIPPLE	2	EA.
19	2-35-000511		1" 150# HALF COUPLING	1	EA.						



BLOWDOWN PIPING ASSEMBLY
0-BD-ASSY01

REV	REVISION DESCRIPTION	B.O.M.	ELEC. ENG	MECH. ENG	CHECKED	APPROVED
-	- INITIAL RELEASE -					
REVISION HISTORY						

UNLESS OTHERWISE NOTED:
DIMENSIONS ARE IN INCHES
TOLERANCES ON:
FRACTIONS ± 1/4
(2) PLACE DEC. ± .01
(3) PLACE DEC. ± .005
ANGLES ± 2 DEG.
SURFACE FINISH
250 MICRO-INCHES

This design and drawings are proprietary and are the exclusive property of The Fulton Companies. The corporation does not permit their use except with prior written consent.

The items shown in this drawing may be covered by one or more patents of The Fulton Companies.

THIRD ANGLE PROJECTION
5 OF 8

DRAWN BY: T. KENNEDY	8/10/2015	MECH. ENG: W.W.	8/18/2015	JOB NUMBER: 507601
CHECKED BY: S.A.C.	8/21/2015	ELEC. ENG: J.E.S.	8/20/2015	PROJECT NAME: NASSAU CANDY FACTORY
B.O.M. REVIEW N/A		APPROVED BY: J.B.	8/19/2015	PROJECT MANAGER: J. ASHBY

DESCRIPTION:
ICS 30 H.P. STEAM BOILER WITH F-30 BLOWOFF SEPARATOR AND VT-30 SIMPLEX RETURN SYSTEM

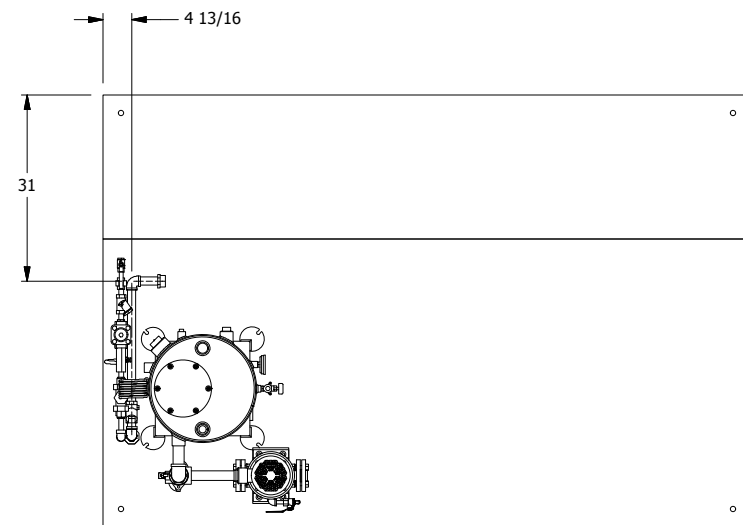
SHEET 5 OF 8

The Fulton Companies
972 Centerville Road
Pulaski, New York USA 13142

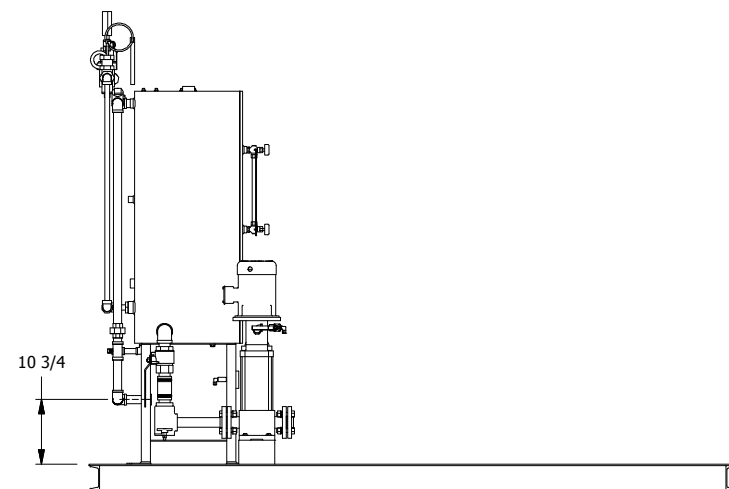
DRAWING NUMBER:
B99-2296

REV
-

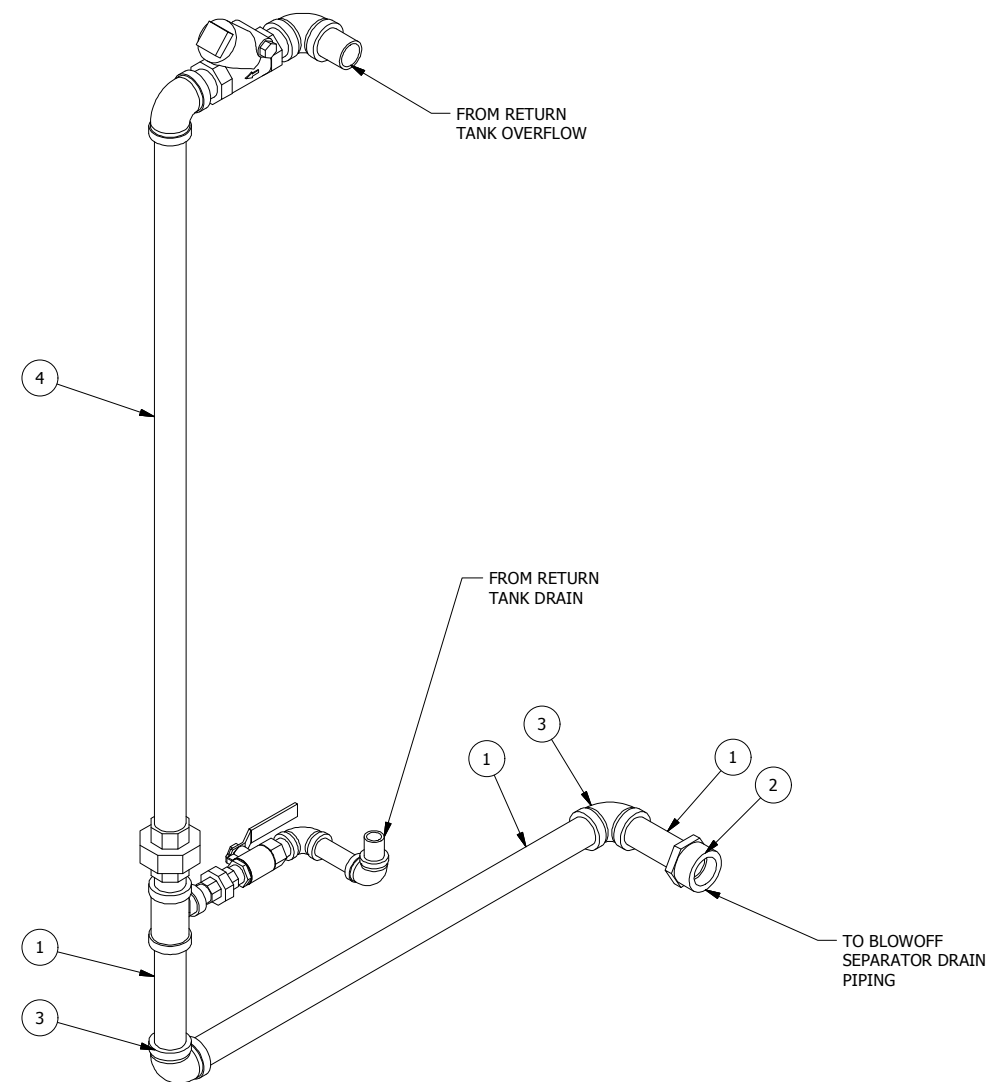
MANUFACTURING B. O. M.					
ITEM	PART NUMBER	REV	DESCRIPTION	QTY	U.O.M.
1	2-10-000109		1" SCH. 40 PIPE	2.9	FT.
2	2-35-000216		1 1/2" X 1" 150# BUSHING	1	EA.
3	2-35-000271		1" THREADED ELBOW	2	EA.
4	6-85-V03001		VT-30 OVERFLOW AND DRAIN SUBASSEMBLY	1	EA.



TOP VIEW



FRONT VIEW



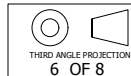
DRAIN PIPING ASSEMBLY
0-DR-ASSY01

-	- INITIAL RELEASE -					
REV	REVISION DESCRIPTION	B.O.M.	ELEC. ENG	MECH. ENG	CHECKED	APPROVED
REVISION HISTORY						

UNLESS OTHERWISE NOTED:
DIMENSIONS ARE IN INCHES
TOLERANCES ON:
FRACTIONS ± 1/4
(2) PLACE DEC. ± .01
(3) PLACE DEC. ± .005
ANGLES ± 2 DEG.
SURFACE FINISH
250 MICRO-INCHES

This design and drawings are proprietary and are the exclusive property of The Fulton Companies. The corporation does not permit their use except with prior written consent.

The items shown in this drawing may be covered by one or more patents of The Fulton Companies.



DRAWN BY: T. KENNEDY	8/10/2015	MECH. ENG: W.W.	8/18/2015	JOB NUMBER: 507601
CHECKED BY: S.A.C.	8/21/2015	ELEC. ENG: J.E.S.	8/20/2015	PROJECT NAME: NASSAU CANDY FACTORY
B.O.M. REVIEW N/A		APPROVED BY: J.B.	8/19/2015	PROJECT MANAGER: J. ASHBY

DESCRIPTION:
ICS 30 H.P. STEAM BOILER WITH F-30 BLOWOFF SEPARATOR AND VT-30 SIMPLEX RETURN SYSTEM

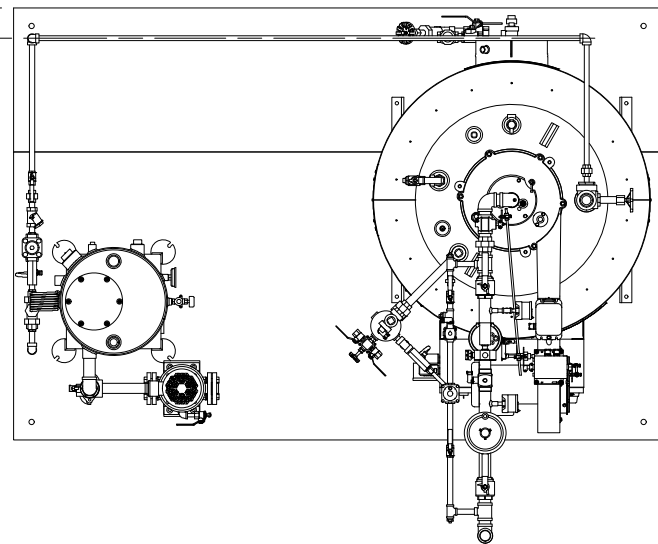
The Fulton Companies
972 Centerville Road
Pulaski, New York USA 13142

DRAWING NUMBER:
B99-2296

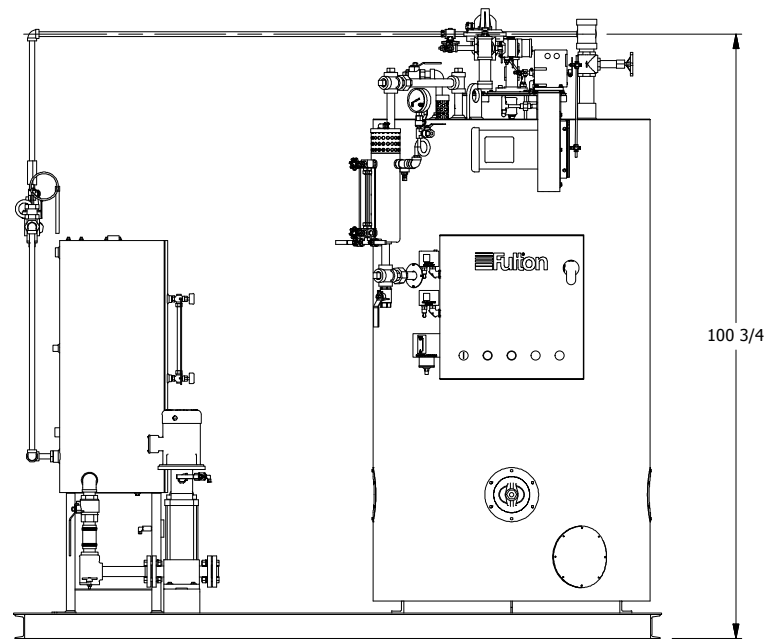
REV
-

SHEET 6 OF 8

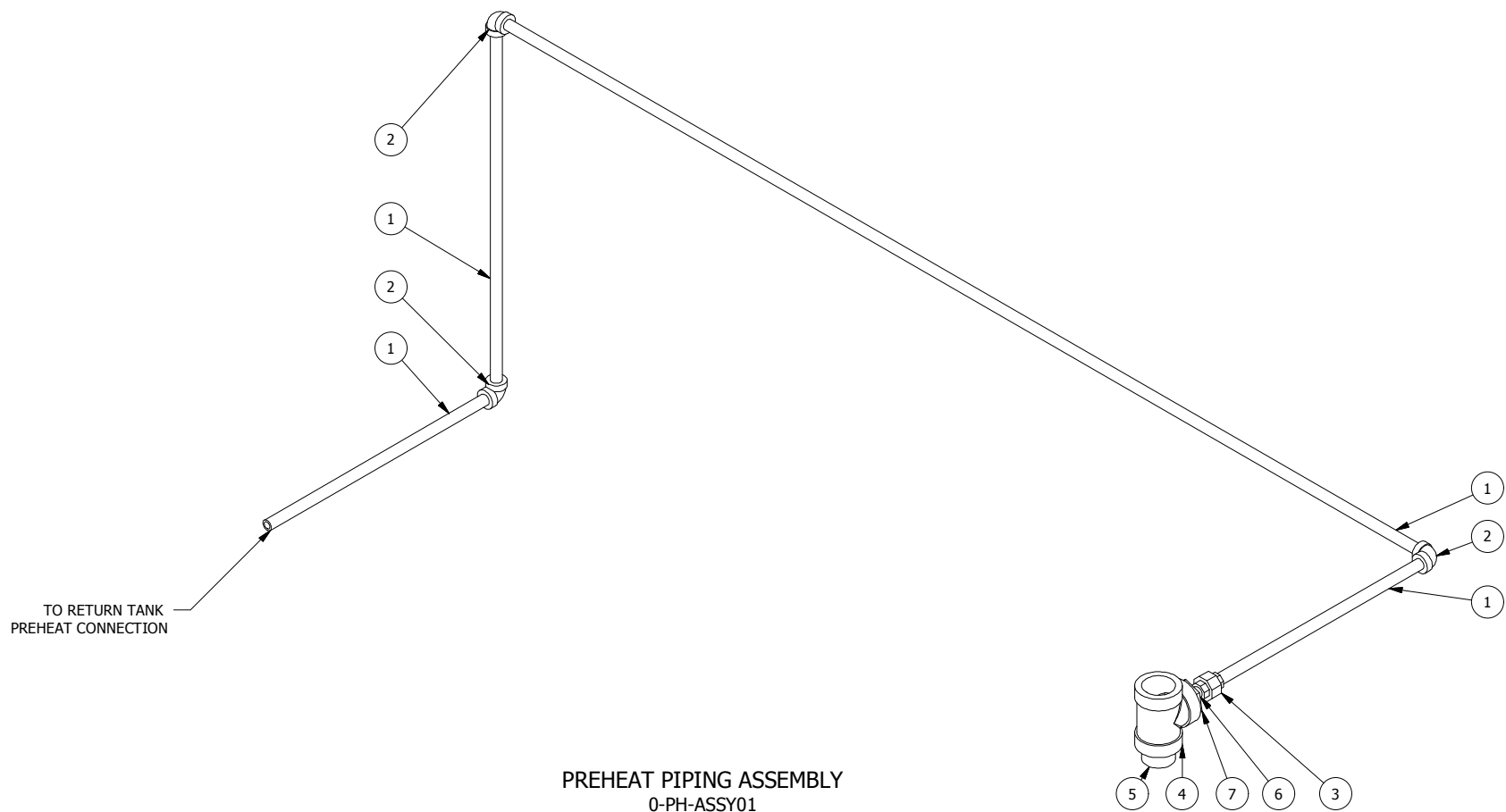
5 1/16



TOP VIEW



FRONT VIEW



PREHEAT PIPING ASSEMBLY
0-PH-ASSY01

MANUFACTURING B. O. M.					
ITEM	PART NUMBER	REV	DESCRIPTION	QTY	U.O.M.
1	1-10-000024		1/2" SCH 80 PIPE	13.77	FT.
2	2-35-000730		1/2" 3000# ELBOW	3	EA.
3	2-35-000732		1/2" 3000# UNION	1	EA.
4	2-35-000754		2" 3000# THREADED TEE	1	EA.
5	2-35-000760		2" X 2" - NPT SCH 80 NIPPLE (SA-106 - PIP205 - CERTIFIED)	1	EA.
6	2-35-000768		1/2" X 2" - NPT SCH 80 SEAMLESS NIPPLE (SA-106 - PIP205 - CERTIFIED)	1	EA.
7	PO#		2" X 1/2" 3000# BUSHING	1	EA.

-	- INITIAL RELEASE -					
REV	REVISION DESCRIPTION	B.O.M.	ELEC. ENG	MECH. ENG	CHECKED	APPROVED
REVISION HISTORY						

UNLESS OTHERWISE NOTED:
DIMENSIONS ARE IN INCHES
TOLERANCES ON:
FRACTIONS ± 1/4
(2) PLACE DEC. ± .01
(3) PLACE DEC. ± .005
ANGLES ± 2 DEG.
SURFACE FINISH
250 MICRO-INCHES

This design and drawings are proprietary and are the exclusive property of The Fulton Companies. The corporation does not permit their use except with prior written consent.

The items shown in this drawing may be covered by one or more patents of The Fulton Companies.

THIRD ANGLE PROJECTION
7 OF 8

DRAWN BY: T. KENNEDY	8/10/2015	MECH. ENG: W.W.	8/18/2015	JOB NUMBER: 507601
CHECKED BY: S.A.C.	8/21/2015	ELEC. ENG: J.E.S.	8/20/2015	PROJECT NAME: NASSAU CANDY FACTORY
B.O.M. REVIEW N/A		APPROVED BY: J.B.	8/19/2015	PROJECT MANAGER: J. ASHBY

DESCRIPTION:
ICS 30 H.P. STEAM BOILER WITH F-30 BLOWOFF SEPARATOR AND VT-30 SIMPLEX RETURN SYSTEM

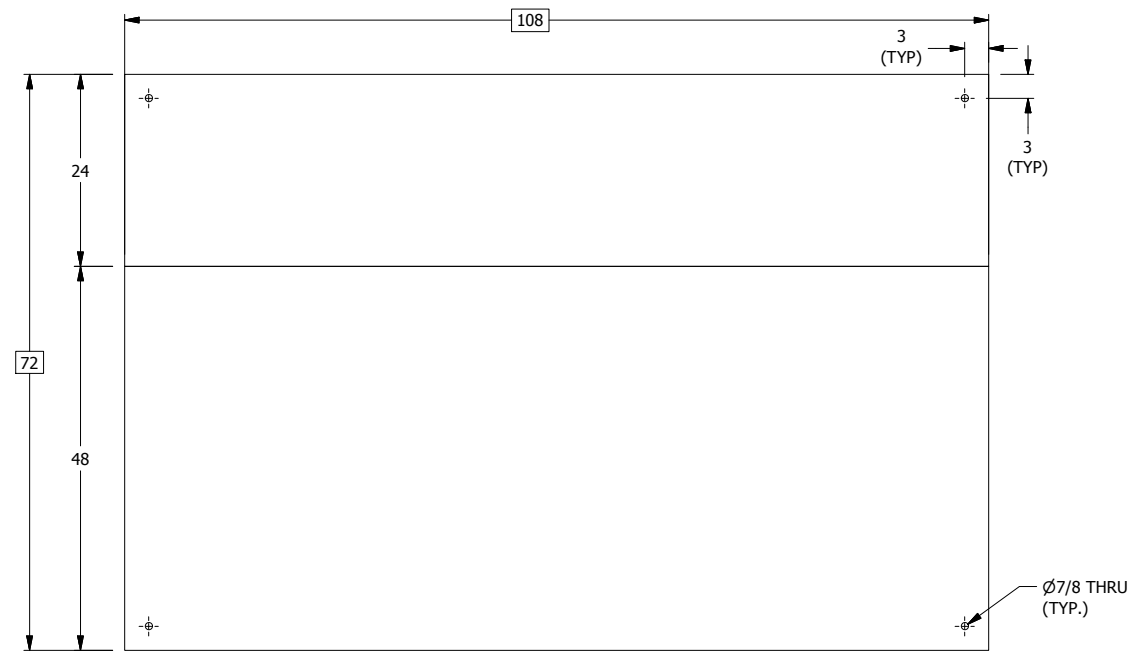
The Fulton Companies
972 Centerville Road
Pulaski, New York USA 13142

DRAWING NUMBER:
B99-2296

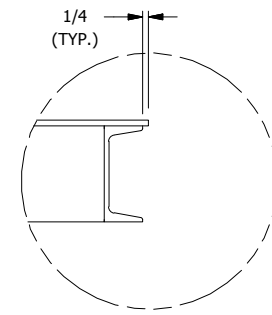
REV
-

SHEET 7 OF 8

MANUFACTURING B. O. M.					
ITEM	PART NUMBER	REV	DESCRIPTION	QTY	U.O.M.
1	1-10-000354		60" X 120" X 1/4" HRS STEEL PLATE	54	SF.
2	2-10-000101		4" X 5.4# CHANNEL A36	55.37	FT.



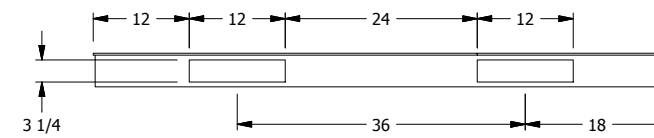
TOP VIEW



DETAIL A



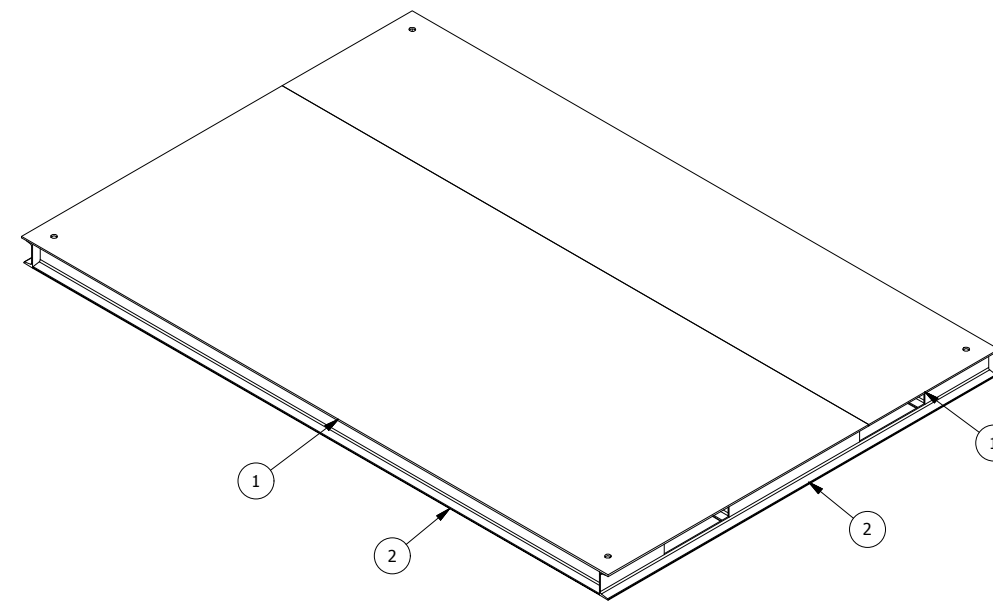
FRONT VIEW



SIDE VIEW



BOTTOM VIEW



ISOMETRIC VIEW

NOTES:
1. LEAVE FRAMING 1/4" AWAY FROM ALL SKID EDGES

- INITIAL RELEASE -						UNLESS OTHERWISE NOTED: DIMENSIONS ARE IN INCHES TOLERANCES ON: FRACTIONS ± 1/4 (2) PLACE DEC. ± .01 (3) PLACE DEC. ± .005 ANGLES ± 2 DEG. SURFACE FINISH 250 MICRO-INCHES		This design and drawings are proprietary and are the exclusive property of The Fulton Companies. The corporation does not permit their use except with prior written consent.		The items shown in this drawing may be covered by one or more patents of The Fulton Companies.		DRAWN BY: T. KENNEDY 8/10/2015		MECH. ENG: W.W. 8/18/2015		JOB NUMBER: 507601		DESCRIPTION: ICS 30 H.P. STEAM BOILER WITH F-30 BLOWOFF SEPARATOR AND VT-30 SIMPLEX RETURN SYSTEM		The Fulton Companies 972 Centerville Road Pulaski, New York USA 13142		Fulton		
REV	REVISION DESCRIPTION	B.O.M.	ELEC. ENG	MECH. ENG	CHECKED	APPROVED	THIRD ANGLE PROJECTION 8 OF 8		CHECKED BY: S.A.C. 8/21/2015		ELEC. ENG: J.E.S. 8/20/2015		PROJECT NAME: NASSAU CANDY FACTORY		B.O.M. REVIEW N/A		APPROVED BY: J.B. 8/19/2015		PROJECT MANAGER: J. ASHBY		DRAWING NUMBER: B99-2296		REV -	
REVISION HISTORY																				SHEET 8 OF 8				