



Search by Part# or Keyword

[Packaging Equipment](#) [Labeling](#) [Food & Beverage](#) [Transferring](#) [Quality Control](#) [Warehouse](#) [Weigh Scales](#) [Supplies](#)

Home / Stretch Wrappers / PP-983HP (High Profile) Pallet Wrapper

[< Prev](#) | [Next >](#)



## PP-983HP (High Profile) Pallet Wrapper

SKU: PP-983HP

The Preferred Pack model PP-983-HP (High Profile = turntable only - no ramp) semi automatic pallet wrapper with [Read more](#)

Choose Model Below

Select

[FEATURES](#) [SPECIFICATIONS](#) [OPTIONS](#) [BROCHURE](#)

Model	PP-983HP (High Profile) No Ramp
Production Rate	30-40 Loads Per Hour
Power Requirements	115 Volts, 1 Phase, 15 Amp
Maximum Load Size	50" L x 50" W x 85" H
Maximum Load	4,000 lbs.

We use cookies on our website to see how you interact with it. By accepting, you agree to our use of such cookies. [Privacy Policy](#)

Settings

Accept All

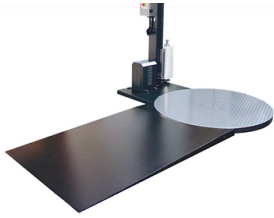
Turntable Drive Method	Heavy Duty Chain ANSI #60
Turntable Support	Heavy Duty Delrin Roller Assembly
Film Delivery System	Patented triple knurled roller with "Easy Thread Design" to stretch film 250%
Machine Dimensions	108" L x 59" W x 102" H
Carriage Elevator	Variable speed 1/2 HP- drive belt
Controls	PLC control with 10 program memory
Fork Lift Portable	Yes
Home Position	Turntable Auto Returns to Home Position
CE Approval	Exceeds OSHA Safety Standards
Film Capacity	All Commercial 20" Wide Stretch Film
Warranty	3 Year Limited Warranty

## Get a Quote

Name	Company
Email	Phone
Which machine are you interested in?	

Submit Request

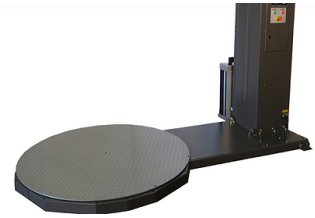
## Related Products



PP-981LP (Low Profile) Pallet Wrapper with Ramp



PP-981HP (High Profile) Pallet Wrapper



PP-982HP (High Profile) Pallet Wrapper

**Customer Service**

- [About](#)
- [Contact](#)
- [FAQ](#)
- [Shipping & Returns](#)
- [Company Policy](#)
- [Privacy Policy](#)

**Products**

- [Packaging Equipment](#)
- [Parts & Materials](#)
- [Labeling](#)
- [Food & Beverage](#)
- [Transferring](#)
- [Quality Control](#)
- [Warehouse Machines](#)
- [Weigh Scale Systems](#)

**Resources**

- [Digital Catalog](#)
- [Request a Catalog](#)
- [Videos](#)
- [Brochures](#)
- [Distributors](#)

**Contact**

11799 Jersey Blvd  
 Rancho Cucamonga, CA 91730  
[info@excelpkgsystems.com](mailto:info@excelpkgsystems.com)

909-476-1100



© 2021 Excel Packaging Systems, Inc. | All Rights Reserved

We use cookies on our website to see how you interact with it. By accepting, you agree to our use of such cookies. [Privacy Policy](#)

[Settings](#)

[Accept All](#)