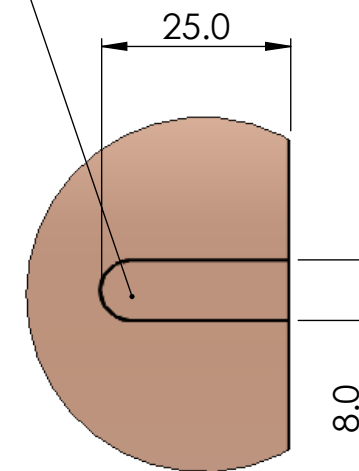


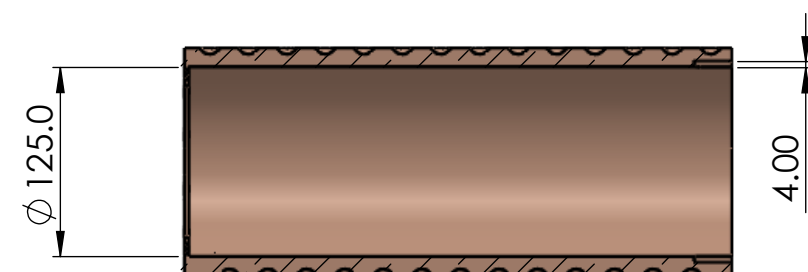
DETAIL A  
SCALE 1 : 1

1.2 REF  
(SEE NOTE  
BELOW)

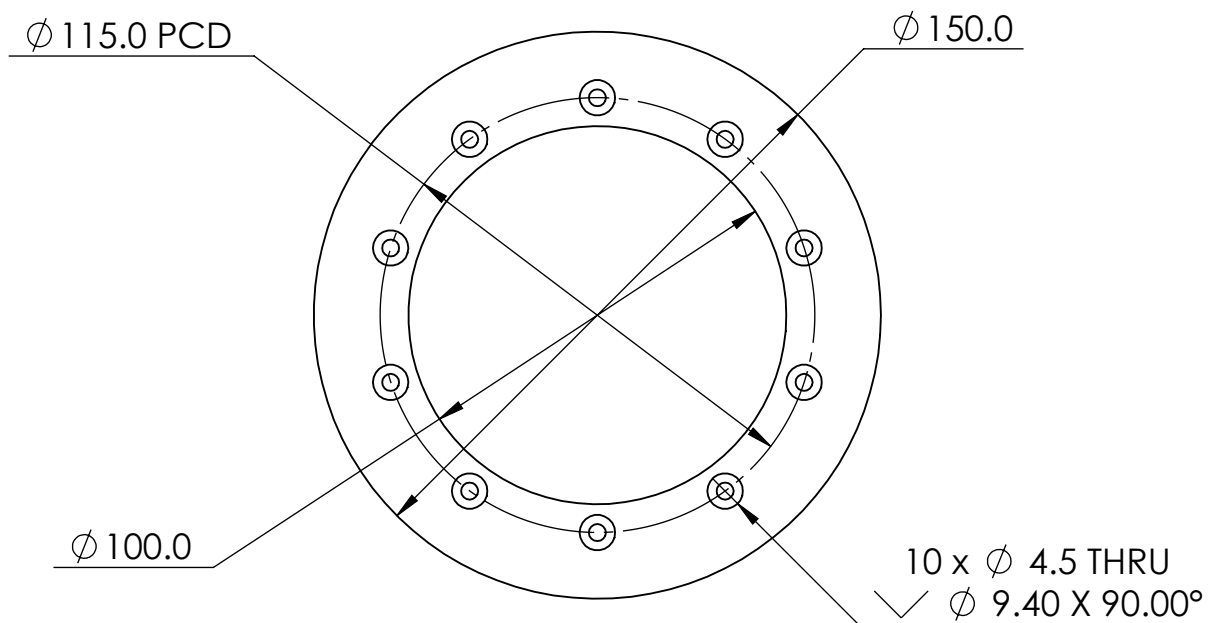
1.8  
APPROX REF  
(USE CANDY PROFILE  
AND .STEP FILE PROVIDED)



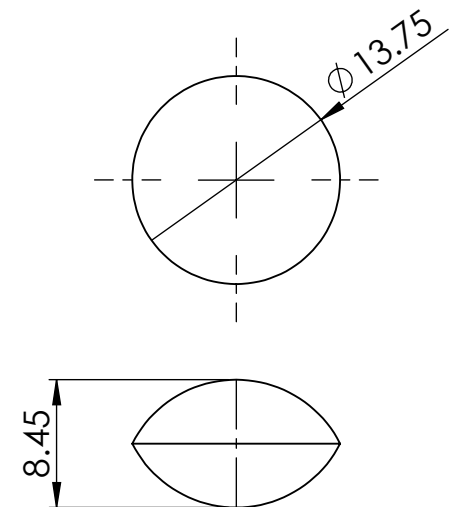
DETAIL C  
SCALE 1:1




SECTION A-A



DETAIL D  
SCALE 1 : 2



## CANDY PROFILE

<b>QUOTATION No:</b> N/A		<b>MATERIAL:</b> LPB1 - BRASS		<b>DRAWING STATUS</b>		<b>PRODUCTION DRAWING</b>	
<b>CONSULTANT:</b> N/A		<b>FINISH:</b> N/A		CLIENT:  -			
<b>DRAWN BY:</b> R.L		<b>VOLTAGE:</b> N/A					
<b>ISSUE DATE:</b> 10-04-18		<b>WEIGHT:</b> N/A		DWG NO:  <b>SK-17044-4</b>			REVISION  <b>C</b>
<b>APPROVED BY:</b>							
				DESCRIPTION  <b>ROLLER DIE OUTER</b>			PAGE SIZE  <b>A3</b>
 <p>2-8 Arkwright Court Blackpool &amp; Fylde Ind Est Blackpool Lancashire FY4 5DR England United Kingdom</p> <p>Telephone: +44 (0) 1253 882961 Web: www.loynds.co.uk Email: sales@loynds.co.uk</p>		<p>UNLESS OTHERWISE SPECIFIED: DIMENSIONS ARE IN MILLIMETERS AND APPROXIMATE.</p> <p>DO NOT SCALE FROM SHEET DRAWING</p>					SHEET 1 OF 1
							SCALE:N/A

"copyright and/or design rights subsist in this drawing. No part of this drawing may be reproduced in any material form (including photocopying or storing in any medium electronic means, whether or not intentionally and whether or not as part of a larger publication) without the express permission of the copyright owner, Loyns International Ltd. Further and without prejudice to the above, this drawing and all the information relating thereto is confidential, and shall be communicated to a third party without the consent of Loyns International Ltd. Loyns International Ltd asserts all rights to be identified as the author of the work and otherwise. WARNING: the doing of any unauthorised act in relation to the copyright work may result in both civil claim for damages and criminal prosecution.