

### MERROW CUT ROLL MACHINE

Fig. 243

Produces hand roll type centers in a rapid, fine, and sanitary manner. It will cut to the most accurate part of an ounce, ranging from  $\frac{1}{4}$  ounce to 2 ounces. Will produce eighty-five to one hundred eighty-five centers per minute, ready for coating. The cutting speed is adjustable, and at the speed of one hundred seventy per minute, it will handle a one hundred and ten pound batch in thirty-five minutes, cutting one-third ounce centers. H P  $\frac{1}{2}$ ; Weight 800 lbs.

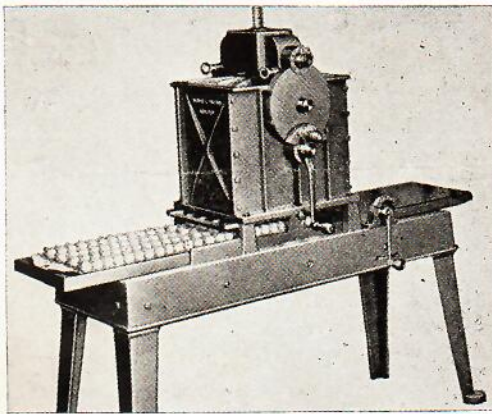
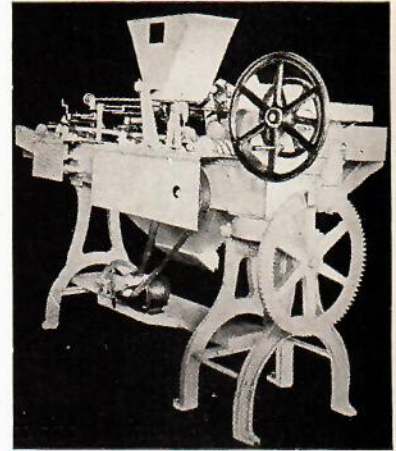


Fig. 244

**DREADNAUGHT MODEL** for production in forming the centers on separate trays for hand dipping and is especially valuable for machine coating. Two speeds for light and heavy work, automatic handling of tray lift and cut-off, insures positive operation with great accuracy.

Capacity of tank, 100 lbs. formed into centers from  $\frac{3}{8}$ "-2" in diameter, of any desired height in about fifteen minutes.

### FRIEND HAND ROLL MACHINES

The Friend machine hand rolls any plastic material with or without nuts, fruits or coconut, including hand roll foundant, nougat, fudge, caramel, etc. Unequaled for quality, volume and low cost of production of hand roll centers.

The type of piece depends on the die used in the machine, the dies are quickly interchangeable and the variety depends upon the number of dies used with the machine.

**MODEL F**, retailers size—Capacity 30 lbs., formed into centers  $\frac{5}{8}$ "-1 $\frac{5}{8}$ " diameter or in sizes 1 $\frac{5}{8}$ " in half the quantity.

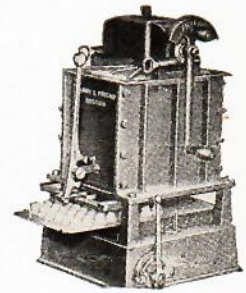
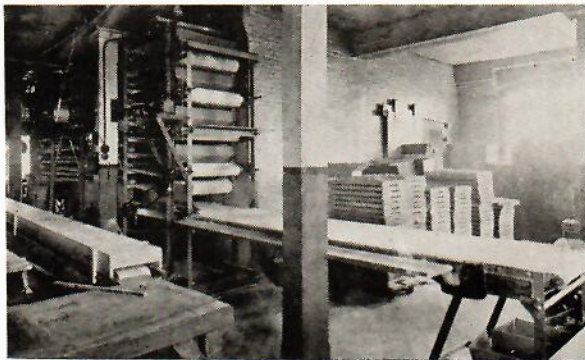


Fig. 310

**MODEL E**, factory size for forming centers on trays—Capacity of tank 70 lbs., will form centers from  $\frac{5}{8}$ "-1 $\frac{5}{8}$ " in diameter of any height covering the usual run.



**Reading Engineering, Endless Belt Gum Drying Conveyor, with Packing Table**

Fig. 113

There are five levels of drying conveyor, giving 100' of travel and taking up only 20' in length. Conveys the gum work automatically (thus eliminating carrying boards and labor, as well as saving floor space) until thoroughly dried, and then delivers it onto the packing table.

### Baltimore Sugar Sanding Machines

Especially desirable for sanding or sugaring gum, jelly goods, etc. Equipped with a special steam box for moistening the pieces before entering the sanding drum, so that a uniform coating of sugar quickly adheres to the pieces.



Fig. 262

**UNION**

Rebuilt  
Machinery

**UNION STANDARD EQUIPMENT COMPANY**